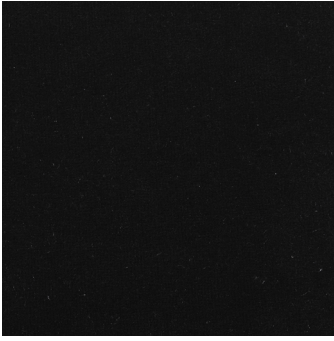


GIANFRANCO
FERRE
HOME

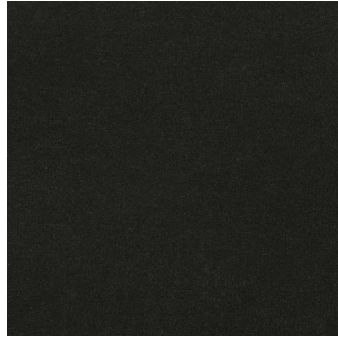
FABRICS AND LEATHERS
COLLECTION

VELVETS

COTTON



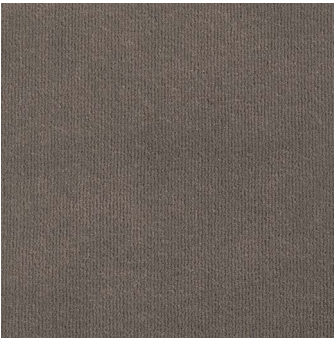
14.02 | cat. A
BLACK
93%CO 7%PL



14.22 | cat. A
BROWN
80%CO 10%PL 10%CDM



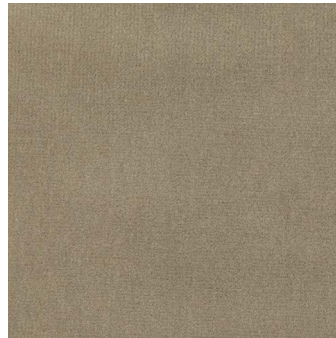
14.08 | cat. A
WHITE
93%CO 7%PL



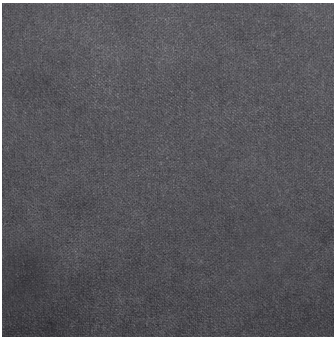
14.16 | cat. A
DOVE GREY
93%CO 7%PL



14.17 | cat. A
LIGHT BEIGE
93%CO 7%PL



14.18 | cat. A
DARK BEIGE
93%CO 7%PL



14.05 | cat. A
GREY
100%CO



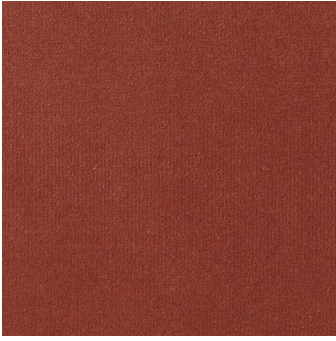
14.13 | cat. A
BLUE
93%CO 7%PL



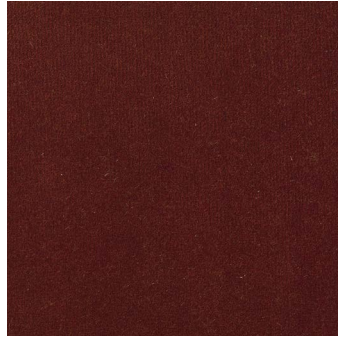
14.37 | cat. A
PETROLEUM BLUE
93%CO 7%PL

VELVETS

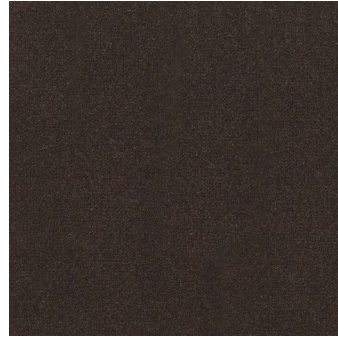
WINTER



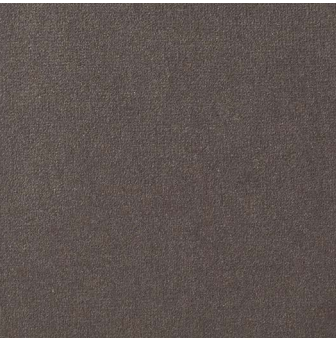
18.43 | cat. B
LOBSTER ORANGE
100%CO



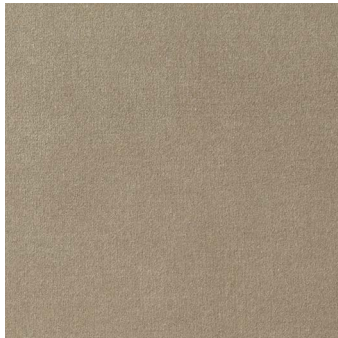
18.44 | cat. B
RED RUST
100%CO



18.45 | cat. B
DARK BROWN
100%CO



18.46 | cat. B
MOUSE GREY
100%CO



18.47 | cat. B
GREIGE
100%CO

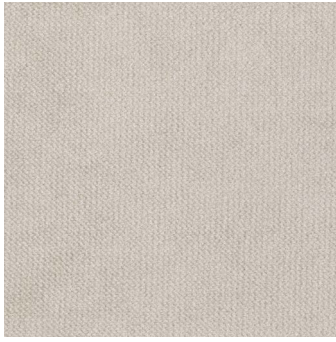
EMBROIDERED



14.19 | cat. C
BLUE
93%CO 7%PL

VELVETS

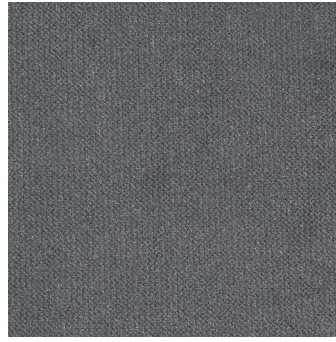
LIGHT



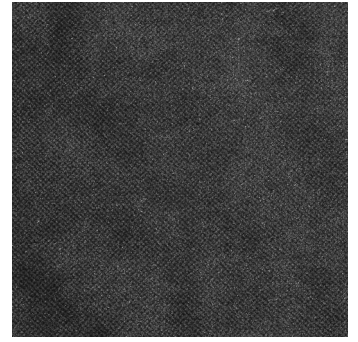
16.01 | cat. A
CLEAR GREY
100%PL



17.06 | cat. B
AVIO
100%PL



17.07 | cat. A
DARK AVIO
100%PL



17.09 | cat. A
DARK GREY
100%PL



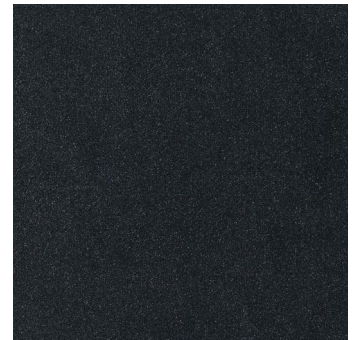
17.17 | cat. A
CLEAR OLIVE GREEN
100%PL



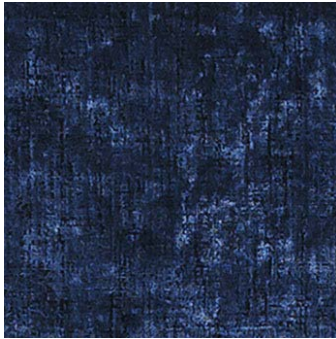
17.19 | cat. A
OLIVE GREEN
100%PL



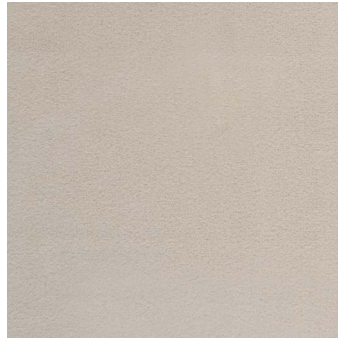
17.20 | cat. B
DARK GREEN
100%PL



17.24 | cat. B
DARK BLUE
100%PL



17.27 | cat. B
BLUE
70%CO 30%PL - PILE 100%VI

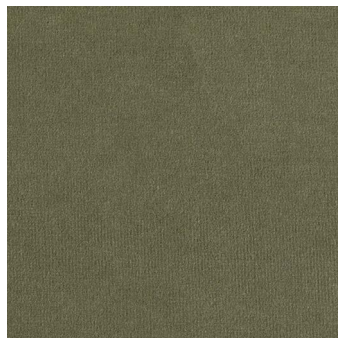


23.22 | cat. A
CREAM
100%PL

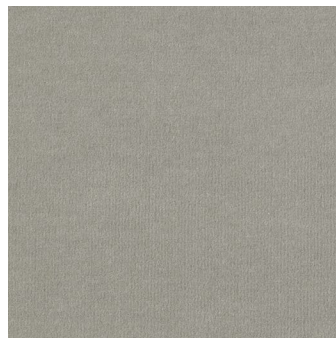
AUTUMN



17.05 | cat. A
SAND
81%VI 14%CO 6%PL



17.21 | cat. B
SAGE
90%CO 10%PL



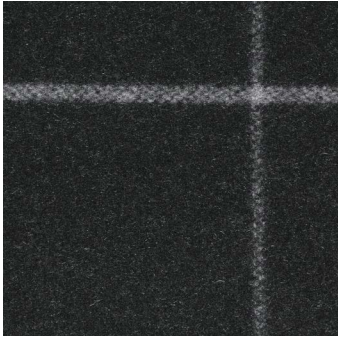
17.22 | cat. B
MINT
90%CO 10%PL



18.51 | cat. D
MARINE
81%VA 14%CO 5%PL

WOOL

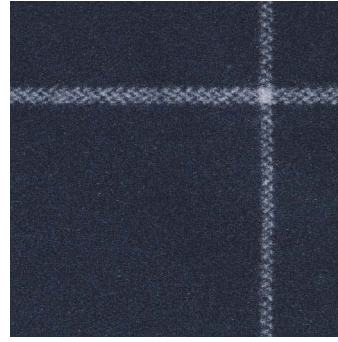
ICONIC



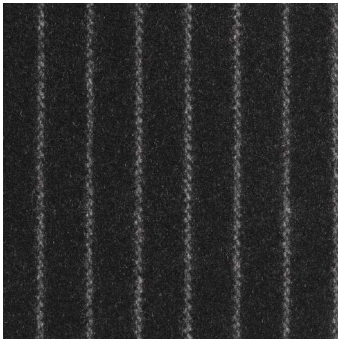
14.03 | cat. C
SQUARES GREY
80%WO 20%PL



14.09 | cat. C
SQUARES BEIGE
80%WO 20%PL



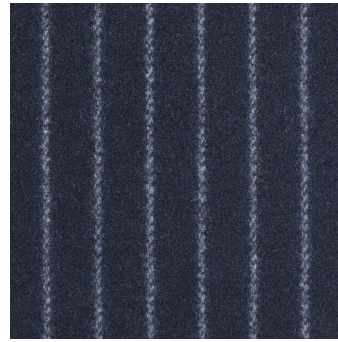
14.11 | cat. C
SQUARES BLUE
80%WO 20%PL



14.04 | cat. C
PINSTRIPES GREY
80%WO 20%PL

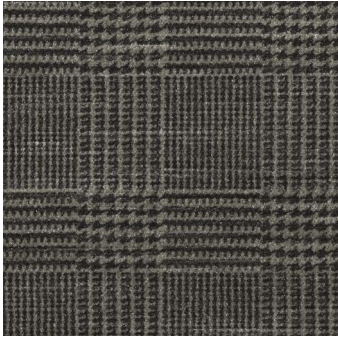


14.10 | cat. C
PINSTRIPES BEIGE
80%WO 20%PL



14.12 | cat. C
PINSTRIPES BLUE
80%WO 20%PL

ICONIC COTTON



14.25 | cat. A
GALLES GREY
100%PL



14.36 | cat. A
GALLES BLUE
100%PL

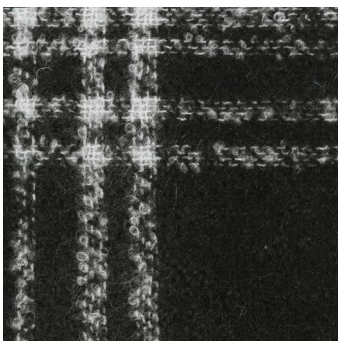


23.02 | cat. A
BROWN ILLUSION
86%CO 14%PL

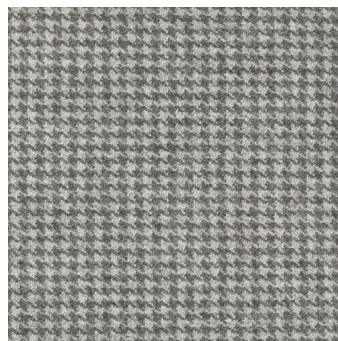


23.04 | cat. A
BLACK & WHITE
47%VI 27%CO 8%PC 7%LI 7%OL 4%AF

ICONIC WINTER



19.07 | cat. C
TARTAN MOHAIR
78%WO 16%PA 6%PA



18.42 | cat. B
PIED DE POULE LIGHT GREY
100%PES

WOOL

BOUCLE



22.08 | cat. A
WHITE
28%WO 26%PL 24%PC 18%CO 4%PA



18.52 | cat. D
CREAM
58%WO 27%CO 15%PA



18.53 | cat. D
BRONZE
58%WO 27%CO 15%PA



18.54 | cat. D
MARINE
58%WO 27%CO 15%PA



23.10 | cat. A
RUST
35%PC 30%PL 28%WV 7%WO



23.11 | cat. B
CLOUD
34%VI 33%PC 17%WO 8%PL 4%LI 4%CO



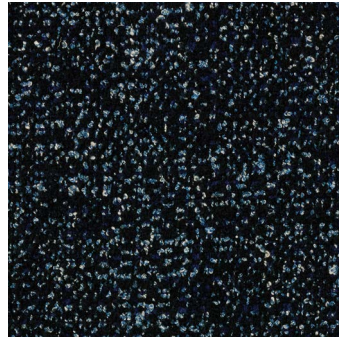
23.12 | cat. B
SAND
34%VI 33%PC 17%WO 8%PL 4%LI 4%CO



23.14 | cat. B
WHITE MOUNTAIN
28%PL 25%PC 24%WO 23%CO



23.15 | cat. B
LIGHT BLUE
45%CO 19%CV 15%WO 13%PAN 8%PA



23.17 | cat. B
DEEP NIGHT
38%PC 28%PL 14%CO 7%WO 6%VI 4%LI 3%PA



23.18 | cat. B
LIGHT GOLD
38%PC 28%PL 14%CO 7%WO 6%VI 4%LI 3%PA



23.19 | cat. B
GOLD TOUCH
38%PC 28%PL 14%CO 7%WO 6%VI 4%LI 3%PA



23.21 | cat. B
SNOW
35%PC 31%WV 23%PL 10%CO 1%AF



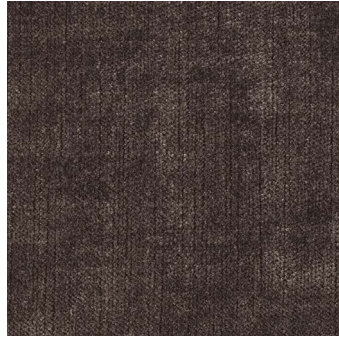
23.23 | cat. A
SOFT WAVE
35%CO 27%PL 23%PC 11%WO

FABRICS

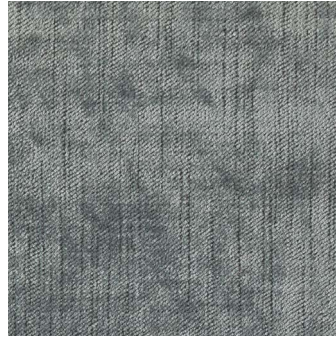
CHENILLE



17.10 | cat. A
ANTHRACITE
100%PES



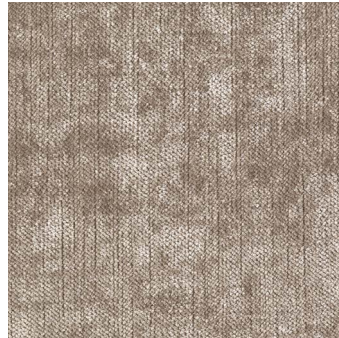
17.14 | cat. A
DARK DOVE
100%PES



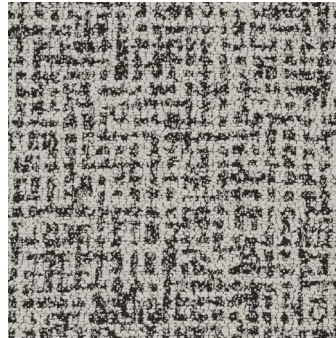
17.23 | cat. A
AVIO
100%PES



16.04 | cat. A
ICE
100%PES



16.15 | cat. A
NUT
100%PES



23.06 | cat. A
FOGGY BLACK
77%PL 16%PA 7%LI



23.07 | cat. A
COZY BROWN
58%PL 23%PC 10%CO 9%PA

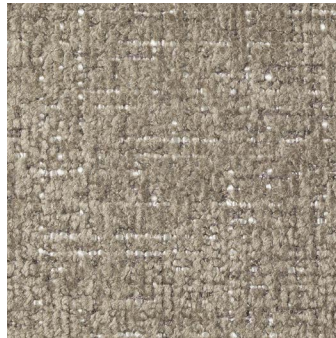
HEAVY CHENILLE



16.02 | cat. A
GREY
71%PAN 29%PES



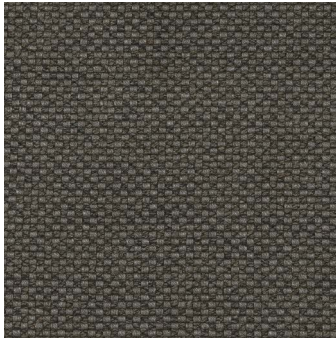
16.03 | cat. A
BEIGE
71%PAN 29%PES



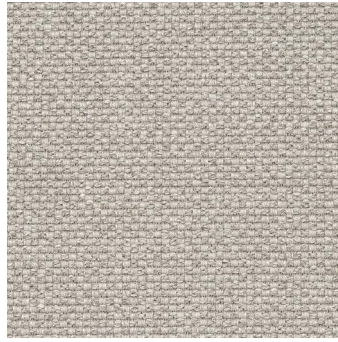
16.07 | cat. A
NUT
71%PAN 29%PES

FABRICS

WOVEN



22.02 | cat. A
DAMIER GREY
52%VI 26%CO 10%LI 9%PC 3%PL



22.03 | cat. A
DAMIER IVORY
52%VI 26%CO 10%LI 9%PC 3%PL



22.04 | cat. A
RED & OLIVE
46%CO 37%VI 17%PL



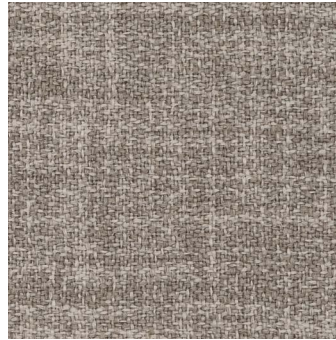
17.13 | cat. A
WHITE & OLIVE
64%VI 15%CO 14%LI 7%PL



22.05 | cat. B
FIFTIES BEIGE
87%PL 13%SE



22.07 | cat. A
BEIGE
48%CO 30%PL 15%VI 7%LI



22.10 | cat. A
RAW TAUPE
100%PL



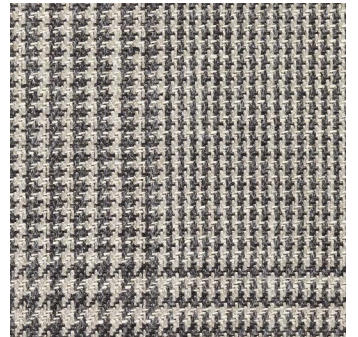
14.31 | cat. B
LIGHT BROWN
54%WO 46%CO



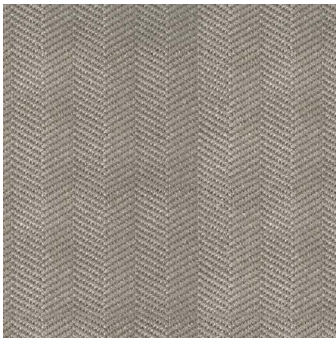
14.24 | cat. B
BROWN
54%WO 46%CO



14.32 | cat. B
GALLES BEIGE
37%CO 29%LI 17%VI 17%PL



16.06 | cat. B
GALLES GREY
37%CO 29%LI 17%VI 17%PL



20.01 | cat. A
CHEVRON GREY
45%CO 25%PL 15%VI 15%PL



14.23 | cat. B
CHEVRON BROWN
45%CO 25%PL 15%VI 15%PL



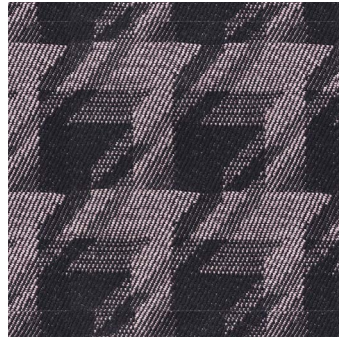
14.34 | cat. B
CHEVRON BLUE
30%WO 28%CO 25%VI 17%AF

FABRICS

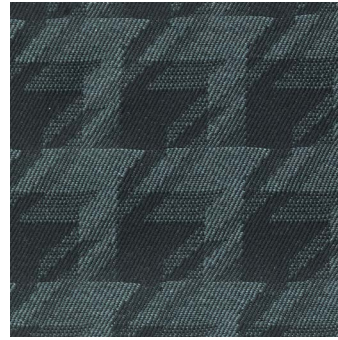
WOVEN



19.10 | cat. A
PIED DE POULE GREY
48%WO 42%CO 10%PA



19.11 | cat. A
PIED DE POULE PINK
48%WO 42%CO 10%PA



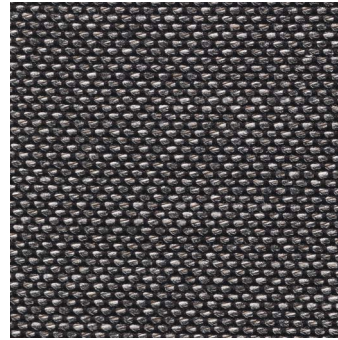
19.12 | cat. A
PIED DE POULE BLUE
48%WO 42%CO 10%PA



20.03 | cat. A
PIED DE POULE BRONZE
59%PL 29%CO 8%PC 4%AF



18.35 | cat. A
CHEVRON LOBSTER
91%PL 9%VI



19.20 | cat. A
DARK GREY
43%VI 30%PL 20%CO 7%LI



23.03 | cat. A
WHITE SHADOW
59%VI 25%PC 16%LI



23.20 | cat. B
BLUE GEOMETRY
70%PL 14%VI 6%PA 6%CO 4%CO

FABRICS

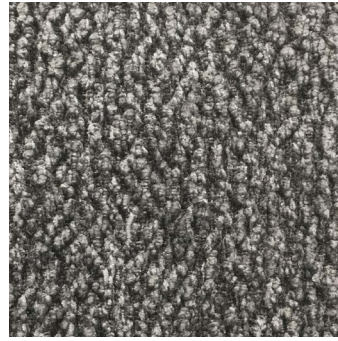
HEAVY WINTER (WOVEN)



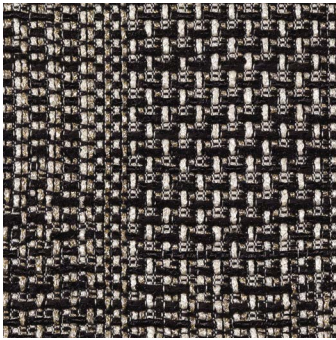
22.06 | cat. A
TAUPE
69%PL 22%VI 9%LI



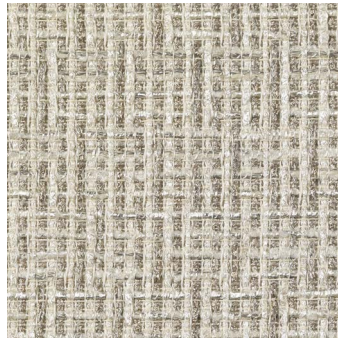
18.34 | cat. A
IRREGULAR BROWN
70%WO 25%PA 5%AF



14.26 | cat. C
GREY
75%VI 13%PL 12%CO



14.27 | cat. B
BLACK & WHITE
66%VI 25%CO 6%LI 2%AF 1%PA



14.30 | cat. B
BEIGE
70%VI 22%CO 6%LI 2%PL



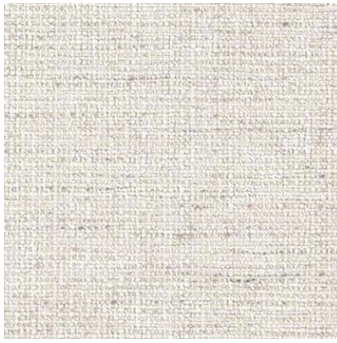
14.29 | cat. C
BLACK & WHITE
72%VI 28%CO



16.14 | cat. C
GREY & WHITE
72%VI 28%CO

FABRICS

KNOTTED



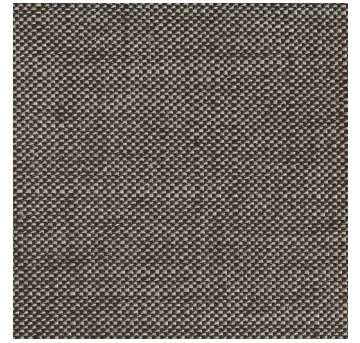
22.01 | cat. A
BEIGE
60%PC 40%PI



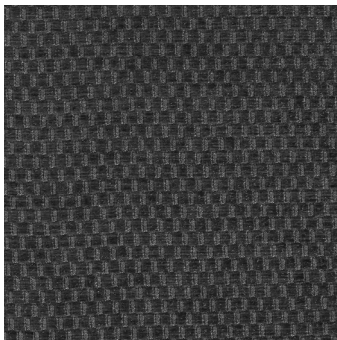
22.09 | cat. A
CHAMPAGNE
100%PI



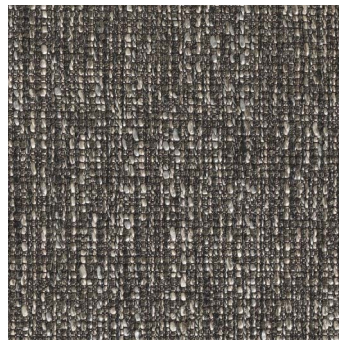
18.36 | cat. A
BRONZE
100%PL



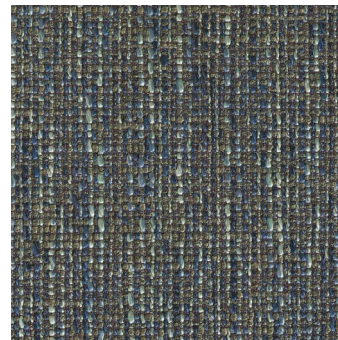
18.37 | cat. B
LIGHT BROWN
46%CV 28%LI 11%CO 11%PES 4%PAN



18.38 | cat. A
BLACK
100%PL



18.39 | cat. A
GREY
60%AC 40%PL



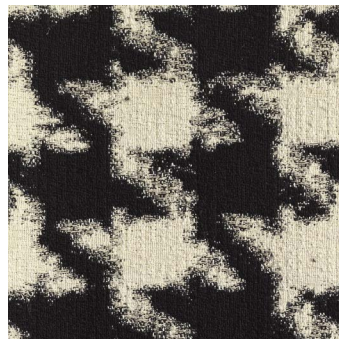
18.40 | cat. A
BLUE
60%AC 40%PL



19.01 | cat. C
BROWN
50%CO 25%PC 15%PA 10%PL



19.02 | cat. C
PIED DE POULE LAMÉ
50%CO 25%PC 15%PA 10%PL



19.05 | cat. A
PIED DE POULE BLACK & WHITE
96%CO 4%EL



20.02 | cat. A
GALLES DARK
100%PL



19.19 | cat. D
SPRING STRIPE
61%PL 39%VI



23.01 | cat. A
NOISY BLACK
92%PL 8%PA



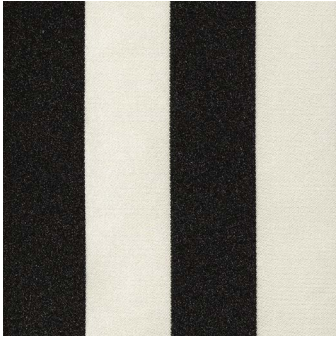
23.05 | cat. A
DUNE
46%PL 25%CO 18%PC 9%PA 2%AF



23.16 | cat. B
BROWN CIRCLES
67%PL 28%PC 5%PA

FABRICS

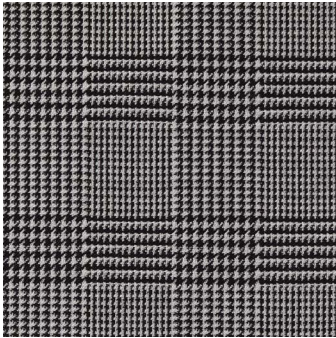
JACQUARD



14.07 | cat. C
BLACK & WHITE
100%PL



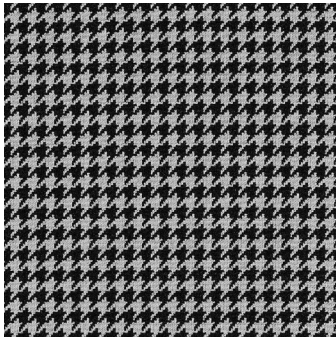
14.33 | cat. C
BLUE & WHITE
100%PL



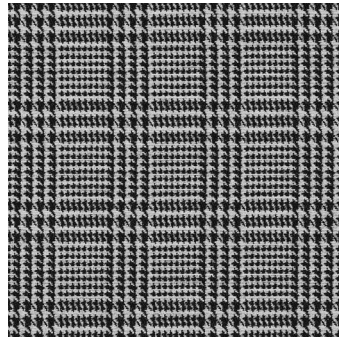
14.06 | cat. B
GALLES BLACK & WHITE
65%WV 35%PL



14.14 | cat. B
GALLES BLUE & WHITE
60%VI 40%PL



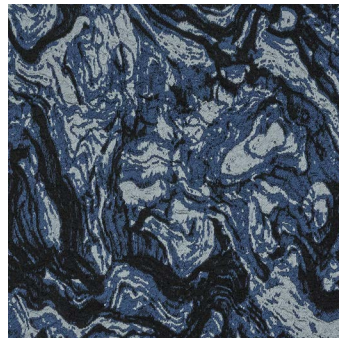
20.04 | cat. B
PIED DE POULE BLACK & WHITE
61%PL 39%WO



20.05 | cat. B
PRINCE OF WALES BLACK & WHITE
40%PC 36%PL 24%WO



23.08 | cat. A
GREEN FOREST
51%PL 49%PC



23.09 | cat. A
BLUE OCEAN
59%PL 15%PC 15%WO 11%PA

TECHNICAL FABRICS

SKIN



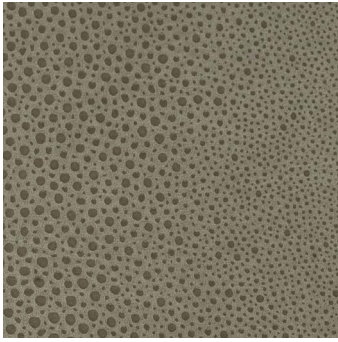
17.02 | cat. A
BROWN
100%PL



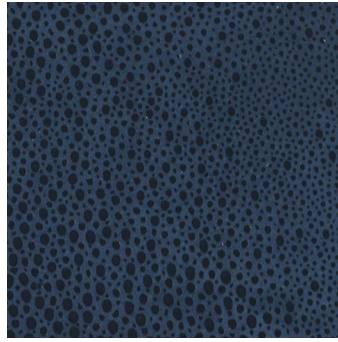
17.18 | cat. A
OLIVE GREEN
45%PL 45%CO 10%PU

LEATHERS

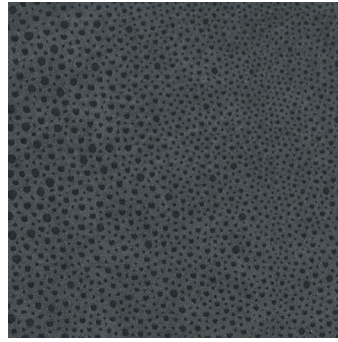
RAZZA



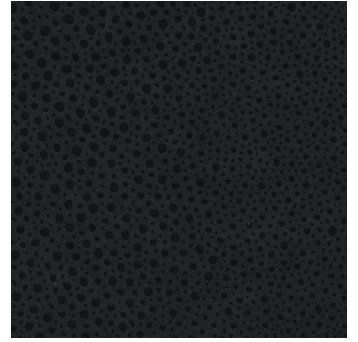
L.03.01 | cat. B
DOVE



L.03.02 | cat. B
BLUE



L.03.03 | cat. B
GREY



L.03.04 | cat. B
BLACK

CAVALLINO



L.01.01 | cat. B
WHITE



L.01.02 | cat. B
DOVE

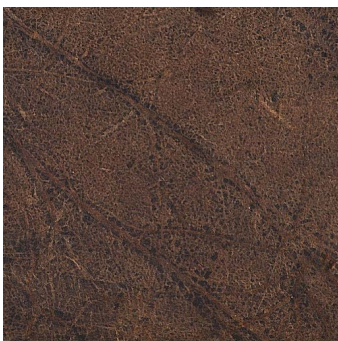


L.01.03 | cat. B
GREY



L.01.04 | cat. B
BLUE

GRUNGE



L.13.01 | cat. B
ANTIQUE DARK BROWN

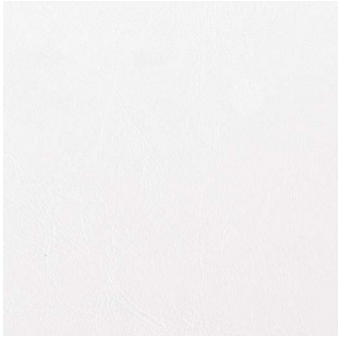
ROUGH



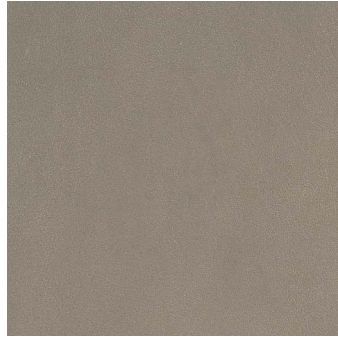
L.12.01 | cat. B
DARK AVIO

LEATHERS

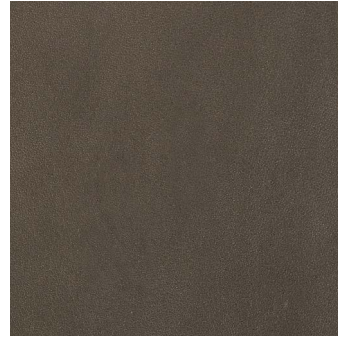
WILD



L.02.01 | cat. A
WHITE



L.02.02 | cat. A
CAPPUCCINO



L.02.03 | cat. A
DOVE

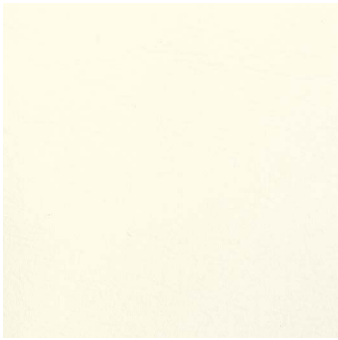


L.02.06 | cat. A
BLACK



L.02.07 | cat. A
CHERRY RED

SAPPHIRE



L.04.01 | cat. A
CHALK



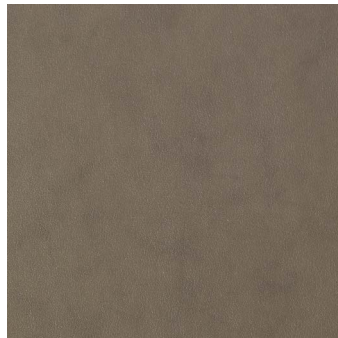
L.04.02 | cat. A
AVIO



L.04.03 | cat. A
BLUE



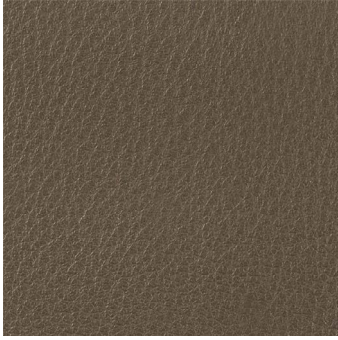
L.04.04 | cat. A
CHESTNUT



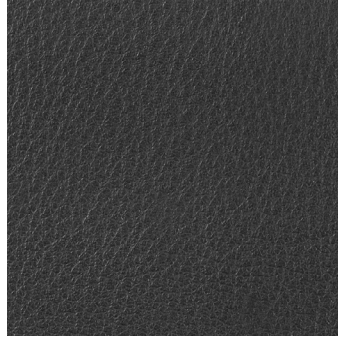
L.04.05 | cat. A
DOVE

LEATHERS

DOGE



L.14.01 | cat. B
TOBACCO

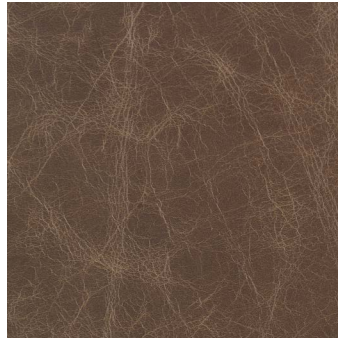


L.14.02 | cat. B
FONDATE

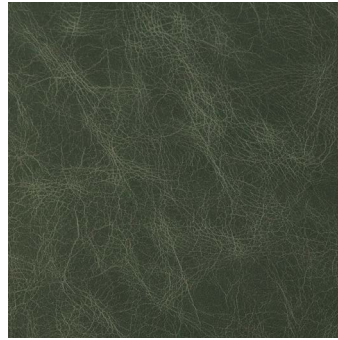
VINTAGE



L.05.01 | cat. A
LIGHT BROWN



L.05.02 | cat. A
BROWN

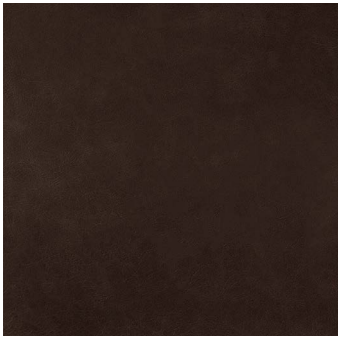


L.05.03 | cat. A
GREEN



L.05.04 | cat. A
BLACK

BLUSH



L.17.01 | cat. B
BROWN

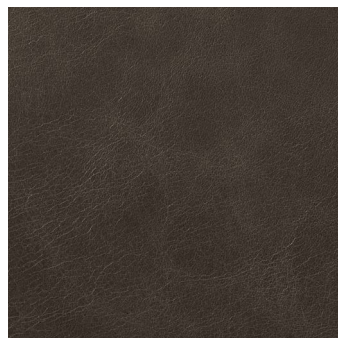
WARM



L.09.01 | cat. C
HONEY



L.09.02 | cat. C
NATURAL SADDLE



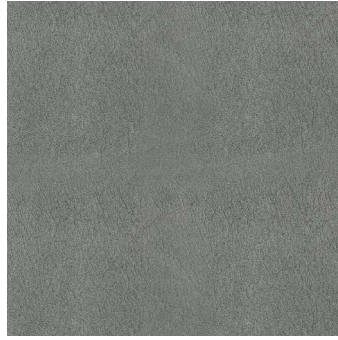
L.09.03 | cat. C
GREY

LEATHERS

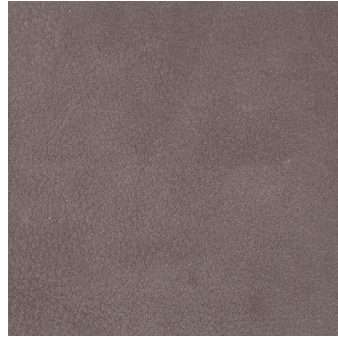
NABUK



L.08.01 | cat. B
SAND



L.08.02 | cat. B
SILVER



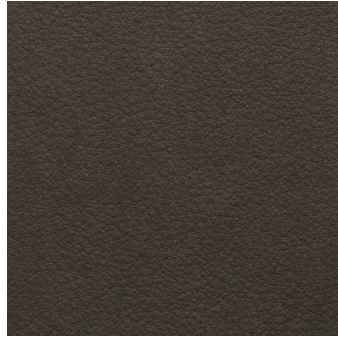
L.08.03 | cat. B
MAUVE



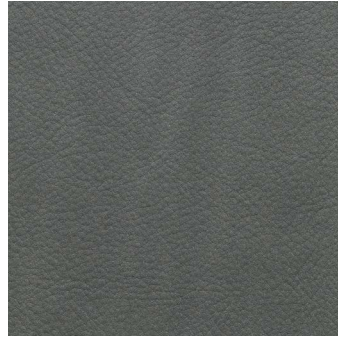
L.08.04 | cat. B
DOVE



L.08.05 | cat. B
BLUE



L.08.06 | cat. B
BROWN



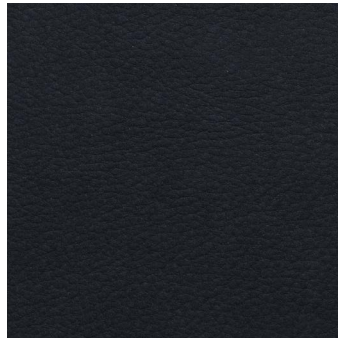
L.08.07 | cat. B
DARK SILVER



L.08.08 | cat. B
TAUPE



L.08.09 | cat. B
RUST



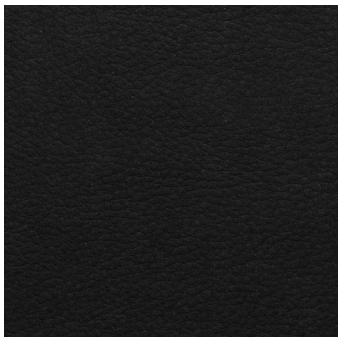
L.08.10 | cat. B
DARK BLUE



L.08.11 | cat. B
GREEN



L.08.12 | cat. B
BORDEAUX



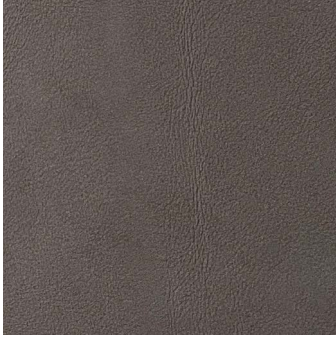
L.08.13 | cat. B
BLACK



L.08.14 | cat. B
MUSTARD

LEATHERS

YOUNG NABUK



L.18.01 | cat. A
DARK DOVE

ANTIQUÉ NABUK



L.11.01 | cat. B
NUT



L.11.02 | cat. B
BROWN

PRINTED NABUK



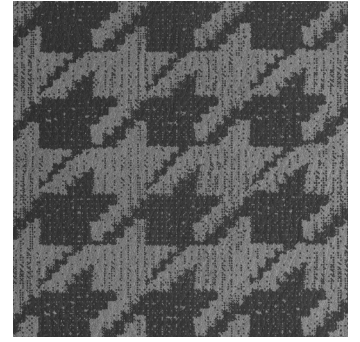
L.15.01 | cat. B
PIED DE POULE WHITE



L.15.02 | cat. B
PIED DE POULE TAUPE



L.15.03 | cat. B
PIED DE POULE BLUE



L.15.04 | cat. B
PIED DE POULE GREY

RELIEF NABUK



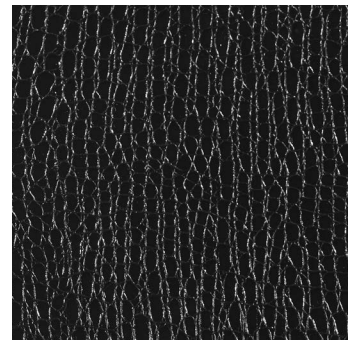
L.16.01 | cat. C
GREY

GLITTER



L.07.01 | cat. B
BEIGE

MICROCOCO



L.06.01 | cat. B
BLACK