

# Brooklyn

---

## LOW TABLES

A refined aesthetic and a vintage inspiration characterize the Brooklyn coffee tables. The metal structure that makes up the legs gives life to a geometric motif that enriches the top in Canaletto Walnut wood or Travertine marble. The tables are available in different heights and sizes, allowing to create scenographic compositions that are suitable for settings in different styles.



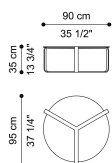
Structure in metal with Black (matt) finishing.

Top in multilayer wood with Canaletto Walnut Veneered finishing and in Travertino marble.

## LOW TABLES

Structure in metal with Black (matt) or Brushed Bronze finishing.

Top in multilayer wood with Tay Veneered Dyed Smokey Grey or Canaletto Walnut Veneered finishing or in Travertino marble and Sahara Noir marble.

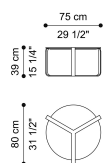


### F.BRY.232.A

Central table

#### Standard features

dia 90 H 35 cm  
dia 35.43 H 13.78 in

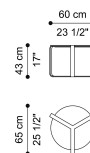


### F.BRY.232.B

Central table

#### Standard features

dia 75 H 39 cm  
dia 29.53 H 15.35 in



### F.BRY.231.A

Side table

#### Standard features

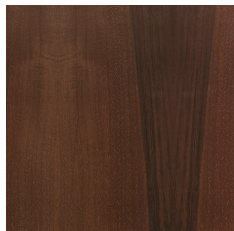
dia 60 H 43 cm  
dia 23.62 H 16.93 in

## LOW TABLES

### TOP



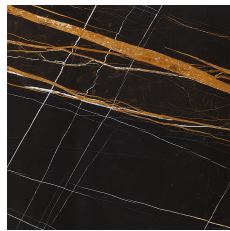
Tay Veneered Dyed  
Smokey Grey



Canaletto Walnut  
Veneered

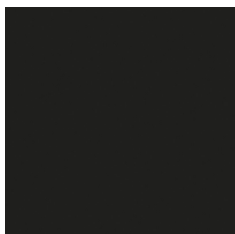


Travertino marble

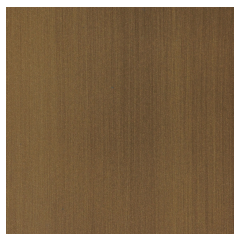


Sahara Noir marble

### STRUCTURE



Black



Brushed Bronze