

Brompton

ARMCHAIRS

Brompton is an armchair with soft round shapes, emphasized by the enveloping and textural white fabric upholstery. The seemingly simple lines conceal a refined aesthetic, expressed in the flawless tailoring and in the details with a strong visual impact, such as the metal support with a matt finish that enhances the back of the armchair. A piece of furniture that confirms the measured balance between intimacy and contemporaneity that defines the entire Gianfranco Ferré Home collection.



Seat in beech wood and variable thickness high density expansive polyurethane foam, with memory foam surface layer.

Upholstery in fabric cat. B Bouclè 23.21 Snow.

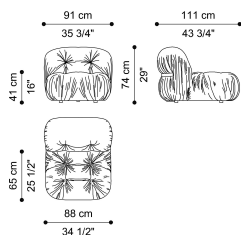
Metal element with Black matt finishing.

ARMCHAIRS

Seat in beech wood and variable thickness high density expansive polyurethane foam, with memory foam surface layer.

Upholstery in fabric or leather from the collection.

Metal element with Brushed Bronze, Brushed Dark Bronze, Black Chrome or Black matt finishing (only for armchair and central element of sofa).

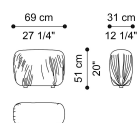


F.BRM.221.A

Armchair

Standard features

L 91 D 111 H 74 cm
L 35.83 D 43.7 H 29.13 in



F.BRM.218.A

Armchair armrest

Standard features

L 69 D 31 H 51 cm
L 27.17 D 12.2 H 20.08 in

ARMCHAIRS

UPHOLSTERY

Fabrics

Cat. A

Cat. B

Cat. C

Leathers

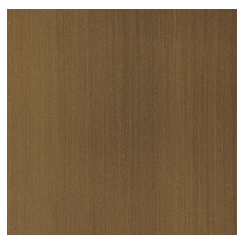
Cat. A

Cat. B

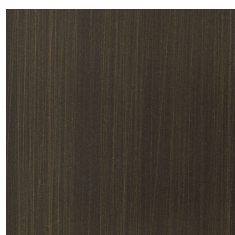
Cat. C

See "Fabrics and Leathers" sheet

STRUCTURE



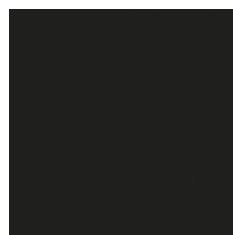
Brushed Bronze



Brushed Dark
Bronze



Black Chrome



Black