

Brompton

MODULAR SOFAS



Seat in beech wood and variable thickness high density expansive polyurethane foam, with memory foam surface layer.

Upholstery in velvet cat. A Light col. 23.22 Cream.

Metal element with Black (matt) finishing.

MODULAR SOFAS

Seat in beech wood and variable thickness high density expansive polyurethane foam, with memory foam surface layer.

Upholstery in fabric or leather from the collection.

Metal element with Brushed Bronze, Brushed Dark Bronze, Black Chrome or Black matt finishing (only for armchair and central element of sofa).

F.BRM.221.A

Armchair

Standard features

L 91 D 111 H 74 cm

L 35.83 D 43.7 H 29.13 in

F.BRM.218.A

Armchair armrest

Standard features

L 69 D 26 H 51 cm

L 27.17 D 10.24 H 20.08 in

MODULAR SOFAS

UPHOLSTERY

Fabrics

Cat. A

Cat. B

Cat. C

Leathers

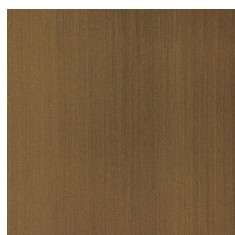
Cat. A

Cat. B

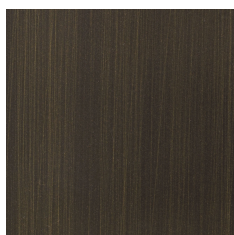
Cat. C

See "Fabrics and Leathers" sheet

STRUCTURE



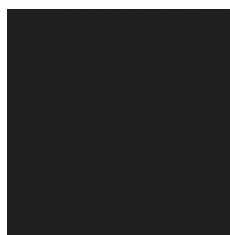
Brushed Bronze



Brushed Dark
Bronze



Black Chrome



Black