

Fly case

DAY UNITS

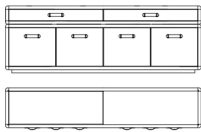
A refined and original composition where the symmetry of the elements combines with the irregularity of the giraffe embroideries, which characterize the leather doors. Fly Case sideboard belongs to the namesake series inspired by the protective containers used for the transport of fragile tools. A functional and dynamic solution with a strong contemporary and decorative appeal.



Fly case

DAY UNITS

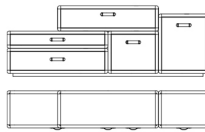
Sideboard with structure in multilayer wood, covered in leather from the collection or veneered in essence from the collection. Optional hexagonal or lozenge quilted leather. Metal details in the finishings from the collection.



C.FLY.113.A

Sideboard 4 doors + 2 drawers

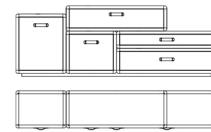
Standard features
L 247 D 50 H 84 cm
L 97.24 D 19.69 H 33.07 in



C.FLY.113.F

Sideboard with doors and drawers - right

Standard features
L 272 D 50 H 95 cm
L 107.09 D 19.69 H 37.4 in



C.FLY.113.G

Sideboard with doors and drawers - left

Standard features
L 272 D 50 H 95 cm
L 107.09 D 19.69 H 37.4 in

Fly case

DAY UNITS

UPHOLSTERY

Leather cat. A

Leather cat. B

Leather cat. C Cavallino

See the detailed files in the "Technical information" section

Fly case

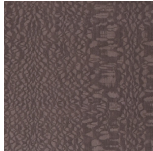
DAY UNITS

STRUCTURE

Wood



Oak
Veneered
Dyed Wengé



Rose
Carbalho
Veneered



Grey
Carbalho
Veneered



Eucalyptus
Frisé
Veneered

Metal



Black
Chrome



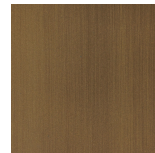
Chrome



Gold



Brushed
Gold



Brushed
Bronze

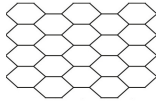


Brushed
Dark Bronze

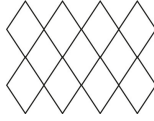
Fly case

DAY UNITS

OPTIONALS UPHOLSTERY



Hexagonal
quilted
leather



Lozenge
quilted
leather