

Vaal

DAY UNITS

Precious and refined materials and a scenographic asymmetrical composition. These are the main characteristics that define the Vaal sideboard, whose original design is the result of an unprecedented combination of non symmetrical elements. A perfect mix to be inserted in environments with a contemporary appeal.



Vaal

DAY UNITS

Sideboard with structure in MDF veneered in essence from the collection or lacquered in the finishings from the collection.

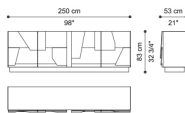
Laser-cut and shaped inserts in sheet iron in the brushed finishings from the collection, that act as handles for the opening of the doors. Optional Gold or Black Chrome metal finishing.

Interior covered in microfibre.

Shelves in bronzed glass.

Base in metal in the brushed finishings from the collection.

Brass plate with RC monogram on sideboard side.



C.VAA.113.A

Sideboard

Standard features

L 250 D 53 H 83 cm

L 98.43 D 20.87 H 32.68 in

Vaal

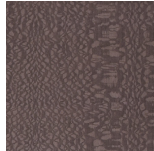
DAY UNITS

STRUCTURE

Wood



Oak
Veneered
Dyed Wengé



Rose
Carbalho
Veneered



Grey
Carbalho
Veneered



Eucalyptus
Frisé
Veneered



Black
Lacquered



Ivory
Lacquered



Desert
Lacquered

Metal



Brushed
Gold



Brushed
Bronze



Brushed
Dark Bronze



Gold



Black
Chrome