

Morne

CONSOLES

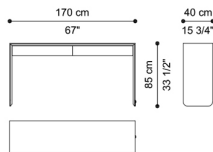


Morne

CONSOLES

Console with structure in MDF, veneered in essence from the collection on the outside and lacquered matt Black or Ivory on the inside, or completely lacquered in the finishings from the collection. Brass plate with RC monogram on side.

Drawer with inner cover in microfibre. Drawer front in MDF covered in patinated Bronze or glossy lacquered Python 3D Printed, or with Antique Bronze finishing.



C.MOE.522.A

Console

Standard features

L 170 D 40 H 85 cm

L 66.93 D 15.75 H 33.46 in

Morne

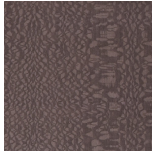
CONSOLES

STRUCTURE

Wood



Oak
Veneered
Dyed Wengé



Rose
Carbalho
Veneered



Grey
Carbalho
Veneered



Eucalyptus
Frisé
Veneered



Black
Lacquered



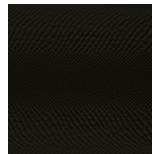
Ivory
Lacquered



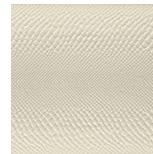
Desert
Lacquered



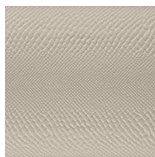
Patinated
Bronze
Python 3d
Printed



Black
Lacquered
Python 3d
Printed



Ivory
Lacquered
Python 3d
Printed



Desert
Lacquered
Python 3d
Printed



Antique
Bronze