

Dorian.2

NIGHT UNITS



Dorian.2

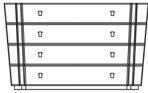
NIGHT UNITS

Drawer unit with structure in multilayer wood veneered in essence from the collection, or glossy lacquered in the colours from the collection, or covered in bevelled natural, bronzed or smoked mirrors.

Drawers with inner cover in microfibre. "Jewel handles" in cast brass in platinum or gold finishing.

Optional marble top. Available on demand in onyx from the collection.

Sand-blasted RC monogram on top for mirror version only.



C.DO2.331.A

Drawer unit

Standard features

L 140 D 52 H 84 cm

L 55.12 D 20.47 H 33.07 in

Dorian.2

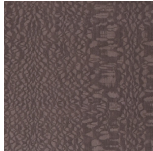
NIGHT UNITS

STRUCTURE

Wood



Oak
Veneered
Dyed Wengé



Rose
Carbalho
Veneered



Grey
Carbalho
Veneered



Eucalyptus
Frisé
Veneered



Black
Lacquered



Ivory
Lacquered



Desert
Lacquered

Mirror



Natural
Mirror



Bronzed
Mirror



Smoked
Mirror

Dorian.2

NIGHT UNITS

OPTIONALS STRUCTURE

Marble or
onyx top