

Molteni & C

505 UP - SYSTEM — NICOLA GALLIZIA 2021

1—
28



A modular, versatile and contemporary system that converges system design and the aesthetics of the finished unit. Each composition is unique. Designed to meet the owner's aesthetic and functional needs, it is created to suit his or her lifestyle, like a tailored suit or dress.

DATASHEET

REGISTERED
DESIGN

IX.2022

moltenigroup.com

Dimensions in millimeters and inches. The right to discontinue and make changes is reserved. This information is based on the latest product information available at the time of printing.

MODULARITY

Measurements

Wall to wall widths:
320 - 480 - 640 - 960 - 1280 - 1440 - 1920 + 32 mm for end side panel
12 5/8" - 18 7/8" - 25 1/4" - 37 3/4" - 50 3/8" - 56 3/4" - 75 5/8" + 1 1/4"

Heights:
465 - 849 - 1233 - 1617 - 2001 - 2385 - 2769 - (2961- 116 5/8" for cutting to length) mm
18 1/4" - 33 3/8" - 48 1/2" - 63 5/8" - 78 3/4" - 93 7/8" - 109"

Structure depth:
320 - 400 mm
12 5/8" - 15 3/4"

Notes

A minimum space of 3 cm (1 1/8") in height is required for assembly, and in the case of installation in a compartment, the width is necessary:
- 4 cm (1 5/8") for floor compositions (2 cm - 3/4" per side)
- 6 cm (2 3/8") for wall-hung compositions (3 cm - 1 1/8" per side)
For cuts in the three dimensions (width, height, depth) the reduction is carried out to the millimetre; in all cases the cost of the reduction is borne by the customer.

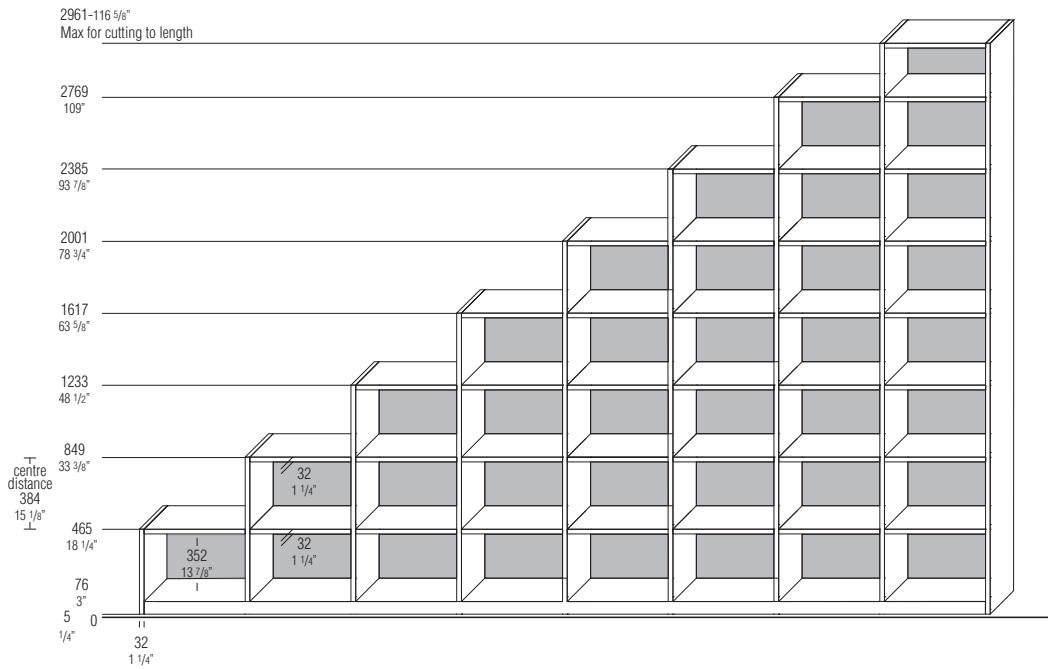
The module width can be reduced by up to 320 mm - 12 5/8" (centre distance):
the W 320 - 12 5/8" module cannot be reduced in width.

No reduction possible for:
Internal and external drawers
Glass hinged doors
Vertical sliding doors
Flap door th 35 (1 3/8")

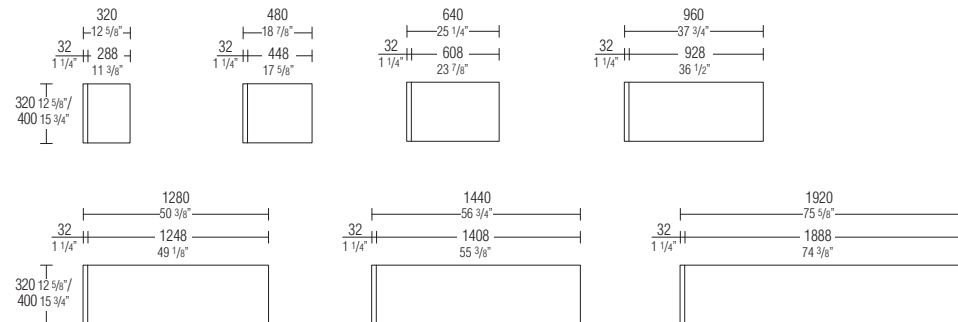
Modules W 1280 (50 3/8"), 1420 (55 7/8") and 1920 (75 5/8") in depth
Protruding elements DISPLAY D 500 (75 5/8")

Molteni & C

Heights and depths of the units resting on the floor



Modularity of widths



DATASHEET

REGISTERED
DESIGN

IX.2022

FINISHES

Wood grain

Pressure opening th 35

- HORIZONTAL GRAIN for vertical sliding, drawers and flap doors

Pressure opening th 22

- HORIZONTAL GRAIN for drawers
- VERTICAL GRAIN for hinged doors

Molteni & C

3—
28

finishes	matt lacquer colours	glossy lacquer colours	glaze	woods	special woods	pewter colour / copper / iris	transparent glass	stopsol transparent glass	net glass	Eco Skin	coloured glass/coloured etched glass	marble	woods rays
components													
32 mm th. structure and base													
back panels													
rear finish panels													
internal drawers													
shelves													
tops													
protruding shelf D 540 mm													
TV back panel													
central dividing glass panel	profile												
	glass												
12 mm thick central dividing panels													
door opening th. 35 mm (vertical sliding/flap/drawers)													
doors / external drawers with pressure opening th 22 mm													
door frame glass th. 35 mm	profile												
	glass							*					
door frame Eco Skin th. 35 mm	profile												
	Eco Skin												
Open DISPLAY / DISPLAY structure													
doors DISPLAY / ext. drawers with press. opening th 22 mm													
door DISPLAY frame glass th 35 mm	profile												
	glass							*					
door DISPLAY frame Eco Skin th 35 mm	profile												
	Eco Skin												

* for stopsol vertical sliding door (etched glass)

colours	Matt lacquer	Glossy lacquer	Woods structure and front	Special woods	Coloured glass	Coloured etched glass	Eco Skin	Marble
	BC chalk white	BC chalk white	EU eucalyptus	RT thermo oak	BC chalk white	BC chalk white	grey	white Carrara
	PE pearl	PE pearl	RF graphite oak	RS sunrise oak	PE pearl	PE pearl	mink	orient grey
	DN dune	DN dune			DN dune	DN dune	hemp	green alpine
	PL platinum	PL platinum			PL platinum	PL platinum	ivory	black marquina
	NE black	NE black			NE black	NE black	dark brown	calacatta gold (special price)
	AT anthracite	AT anthracite			AT anthracite	AT anthracite	earth	
	SE mustard	SE mustard			SE mustard	SE mustard	arctic	
	SI silica	SI silica			SI silica	SI silica	taupe	
	DO dolomite grey	DO dolomite grey			DO dolomite grey	DO dolomite grey		
	AL clay	AL clay			AL clay	AL clay		
	MK moka	MK moka			MK moka	MK moka		
	CZ light blue grey	CZ light blue grey			CZ light blue grey	CZ light blue grey		
	SA sand	SA sand			SA sand	SA sand		
	RU ruby	RU ruby			RU ruby	RU ruby		
	PX pewter colour	PX pewter colour			PX pewter colour	PX pewter colour		
	RX copper	RX copper			RX copper	RX copper		
	TO dove grey	TO dove grey			TO dove grey	TO dove grey		
	PR petroleum blue	PR petroleum blue			PR petroleum blue	PR petroleum blue		
	BG burgundy	BG burgundy			BG burgundy	BG burgundy		
	LS london sky	LS london sky			LS london sky	LS london sky		
	SU stardust	SU stardust			SU stardust	SU stardust		
	ML moonlight	ML moonlight			ML moonlight	ML moonlight		
	SP spice	SP spice			SP spice	SP spice		

DATASHEET

REGISTERED
DESIGN

IX.2022

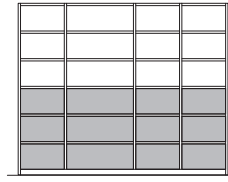
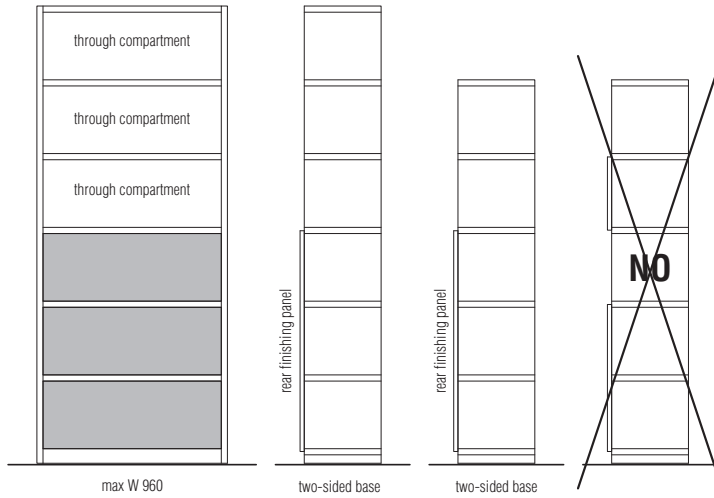
HARRY'S BAR MODULE FINISHES

finishes	matt lacquer colours	wood/ special woods	pewter colour / copper / iris	transparent stopsol glass/ stopsol glass etched	Eco Skin	calacatta vena vecchia ceramic	pewter colour matt lacquer	black oak/ black	coloured etched glass
components									
structure									
back panel									
drawer-tray front									
wine glass rack									
drawer accessories									
drawer top unit									
glass doors	profiles								
	glass								
wooden doors	door								
	internal bottom								
	containers								

colours	Matt lacquer	Wood	Eco Skin	Coloured etched glass
	BC chalk white	EU eucalyptus	grey	BC chalk white
	PE pearl	RF graphite oak	dark brown	PE pearl
	DN dune			DN dune
	PL platinum	Special woods		PL platinum
	NE black	RT thermo oak		NE black
	AT anthracite	RS sunrise oak		AT anthracite
	SE mustard			SE mustard
	SI silica			SI silica
	DO dolomite grey			DO dolomite grey
	AL clay			AL clay
	MK moka			MK moka
	CZ light blue grey			CZ light blue grey
	SA sand			SA sand
	RU ruby			RU ruby
	PX pewter colour			PX pewter colour
	RX copper			RX copper
	TO dove grey			TO dove grey
	PR petroleum blue			PR petroleum blue
	BG burgundy			BG burgundy
	LS london sky			LS london sky
	SU stardust			SU stardust
	ML moonlight			ML moonlight
	SP spice			SP spice

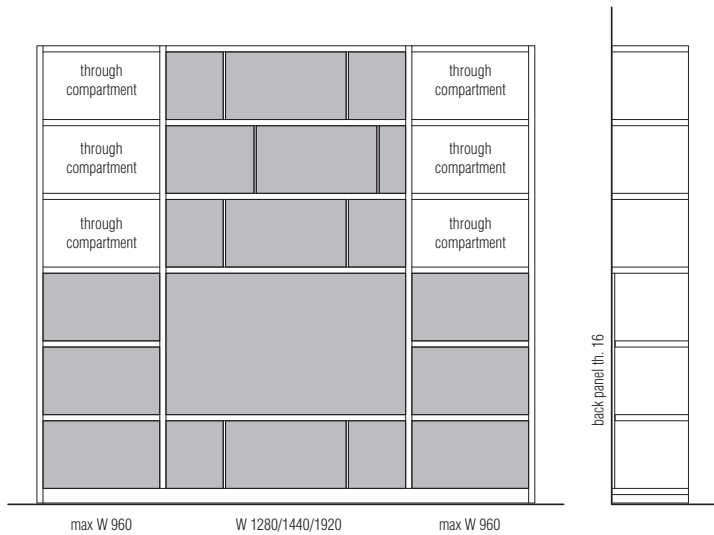
Molteni & C

THROUGH COMPARTMENTS



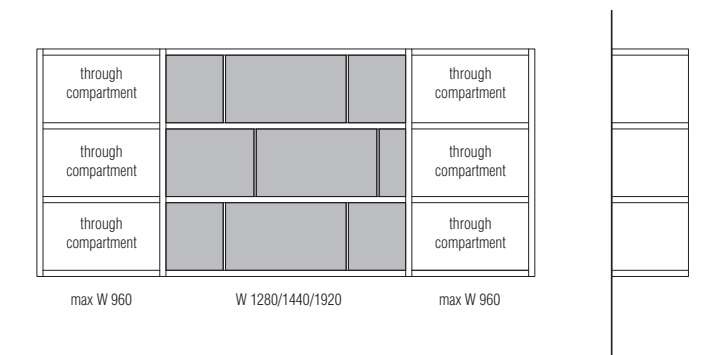
Two-sided compositions (centre of room) with through compartments

- Through compartment available for modules with max W 960.
- Rear finishing panels starting from the base covering 50% of the structure in height; in the event of an odd number of compartments, 50% plus one compartment.
- It is not possible to fit DISPLAY in through compartments.
- It is not possible to install lights because all the work for the cable routing would be visible on one side.
- Central dividing panels cannot be inserted in through compartments, as the joints would be visible.
- For the W 960 compartment, a reinforced shelf can be fitted at the customer's discretion.



Wall compositions with through compartments

- Through compartment available for modules with max W 960.
- Th. 16 back starting from the base covering 50% of the structure in height; in the event of an odd number of compartments, 50% plus one compartment.
- It is possible to include lights, but it is the responsibility of the installer to conceal the cable passage in compartments that do not have backs.
- Central dividing panels can be inserted in the through compartments.
- For the W 960 compartment, a reinforced shelf can be fitted at the customer's discretion.



Hanging compositions with through compartments

- Through compartment available for modules with max W 960.
- It is not possible to fit DISPLAY in through compartments.
- It is possible to include lights, but it is the responsibility of the installer to conceal the cable passage in compartments that do not have backs.
- Central dividing panels can be inserted in the through compartments.
- For the W 960 compartment, a reinforced shelf can be fitted at the Customer's discretion.

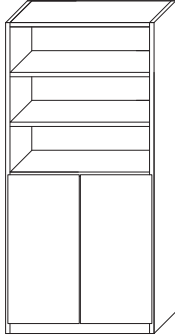
DATASHEET

REGISTERED
DESIGN

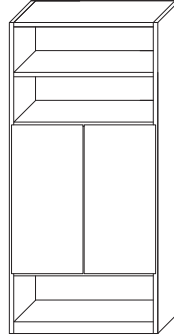
IX.2022

**Compositions with
wooden doors**

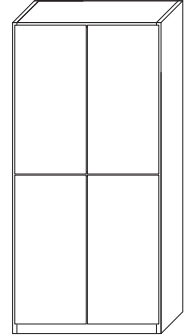
from the ground - max 3 modules



hanging - max 3 modules

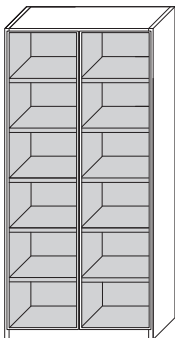


stacked - max 3 modules

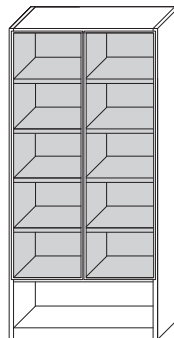


**Compositions with
glass doors**

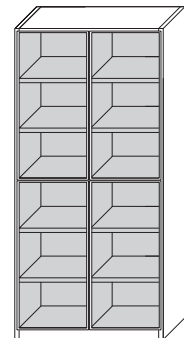
from the ground - max 6 modules



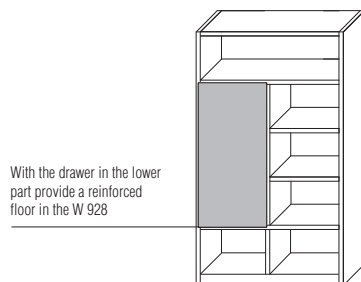
hanging - max 5 modules



stacked - max 3 modules



**Compartments division W 960
for partial closure with door**



With the drawer in the lower
part provide a reinforced
floor in the W 926

In the case of installing
a central dividing panel
H 2 and H 3 modules
it is necessary to insert the
central dividing panels also
in the compartments below

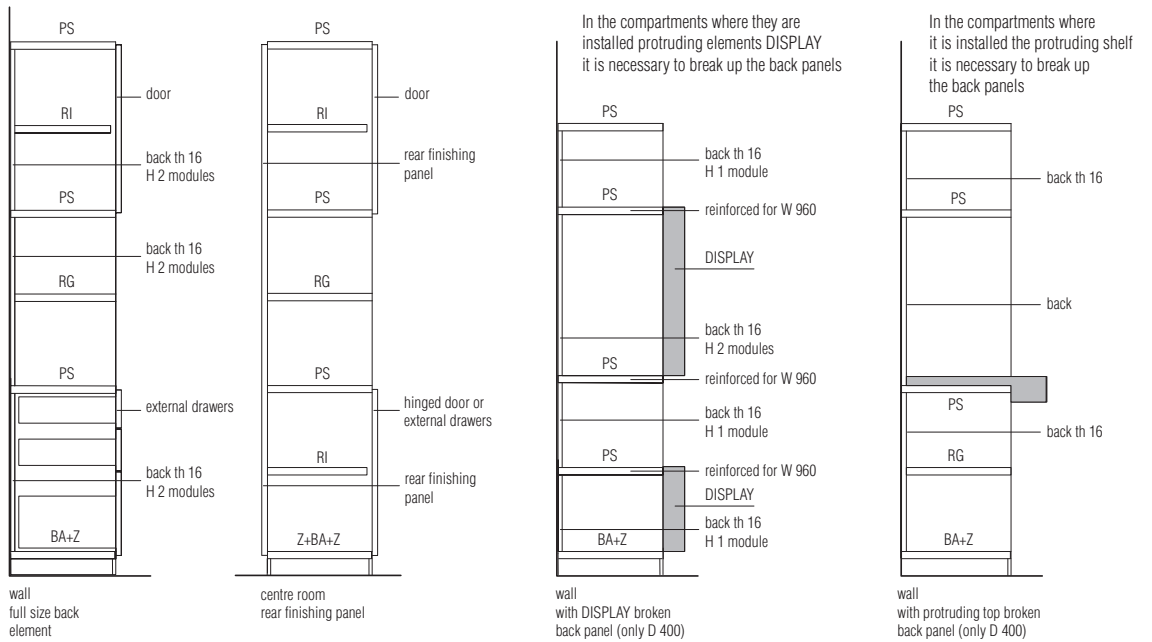
MODULE CONSTRUCTION UP TO W 960 (37 3/4")

Modules must always have full or divided backs 16 th.
Double-sided compositions can be made with back panels. **The presence of back panels or rear finish panels is essential for the stability of the compositions.**
Any requests for modules with opening compartments must be examined by the Molteni Technical Office as they could compromise the stability of the composition.

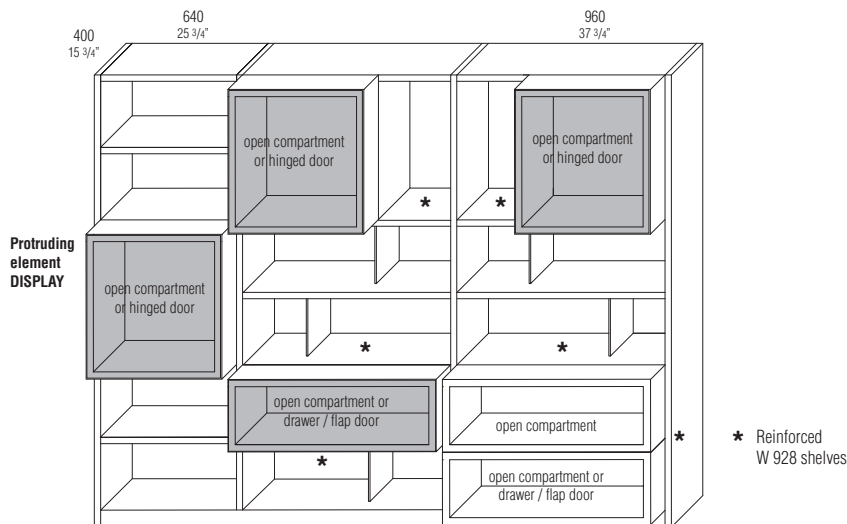
Key to symbols
PS - structural shelves
RG - open shelves
RI - internal shelves
BA - base
Z - plinth

Molteni & C

7 -
28



DISPLAY positioning



The protruding DISPLAY element can be installed in the same size compartment or in a larger compartment.

The positioning inside the compartment must always respect the 160 mm pitch because it is fixed to the structure D 400.

A central dividing panel or another DISPLAY must always be inserted in the compartments below the protruding DISPLAY element, with the exception of the W 640 module.

In W 960 compartments, the structural shelf below and/or above the DISPLAY must be reinforced.

Only an open DISPLAY can be placed above and below the protruding DISPLAY with flap door.

DATASHEET

REGISTERED
DESIGN

IX.2022

MODULES CONSTRUCTION 1280-1440-1920 (50 3/8" - 56 3/4" - 75 5/8")

For the construction of these modules, it is mandatory to have in each compartment:

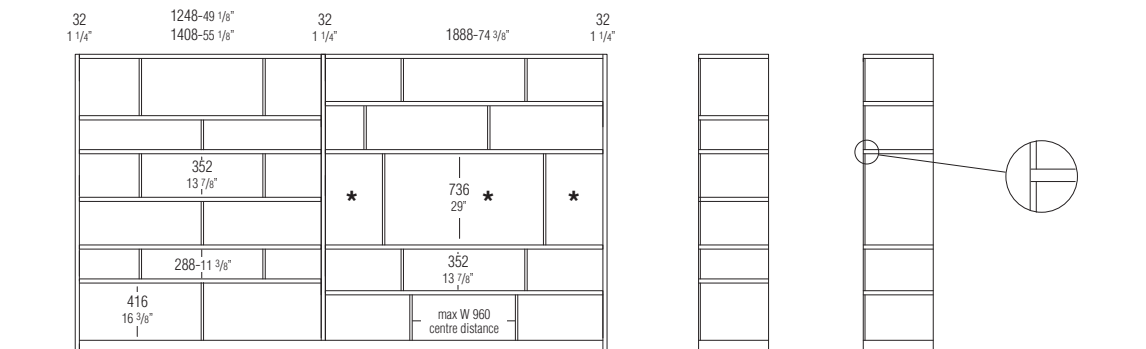
- 16 mm th back panel (always in module width)
- one or more central dividing panels (wood, 32 mm th - glass, 10 mm th or rounded, 12 mm th) positioned at 160 mm intervals at a maximum distance of 960 mm for 1280/1440 mm wide compartments
- two or more central dividing panels positioned at 160 mm intervals at a maximum distance of 960 mm for W 1920 compartments.

This construction does not require reinforced structural shelves except in cases of installation of the DISPLAY or in other situations indicated in the specific paragraphs.

In the open area, it is possible to make compartments 64 mm higher or lower than the standard module (mm 352).
For this purpose, 416 mm and 288 mm centre dividers and back panels are available.
Within a column, the 416 mm and 288 mm recesses must always offset each other.

Molteni & C

8—
28



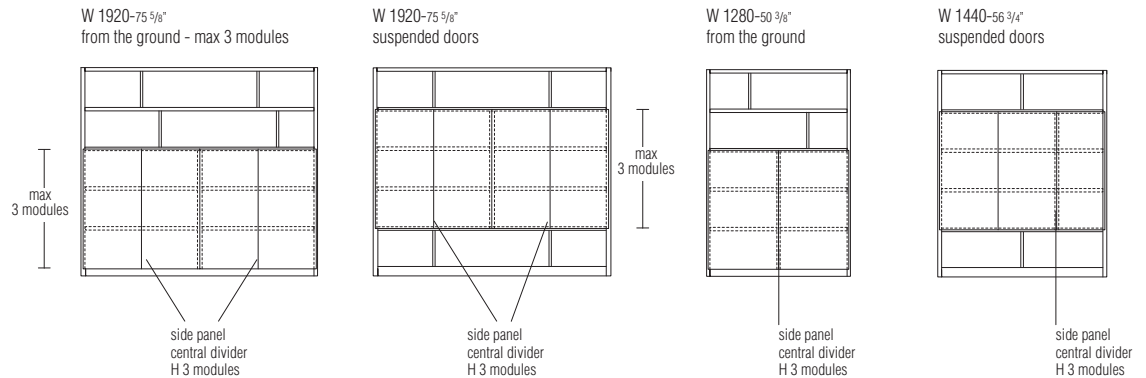
At least two dividing panels per compartment at a maximum distance of mm 960

* The indicated compartments can be closed with wooden or glass doors using 32 mm th. wooden central partition walls

The maximum height of the wooden panels are 1120 mm (H 3 modules)

Modules W 1280-1440-1920 (50 3/8" - 56 3/4" - 75 5/8") with doors

Compositions with doors



DATASHEET

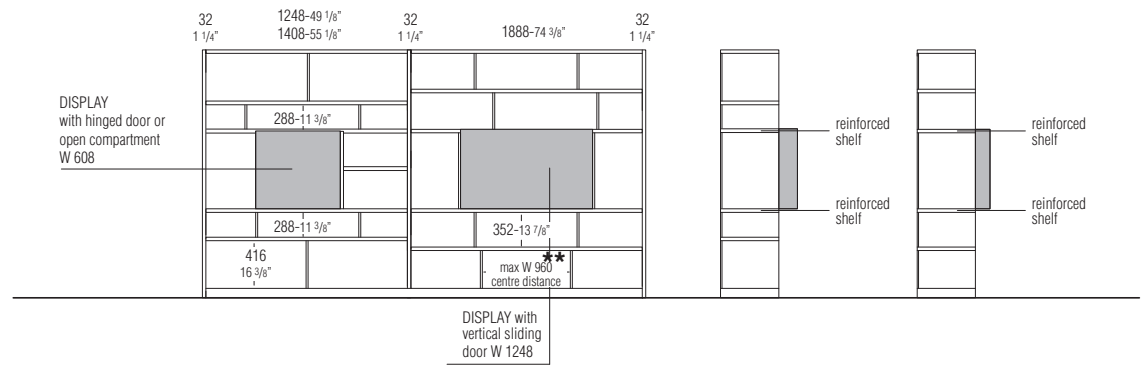
REGISTERED
DESIGN

IX.2022

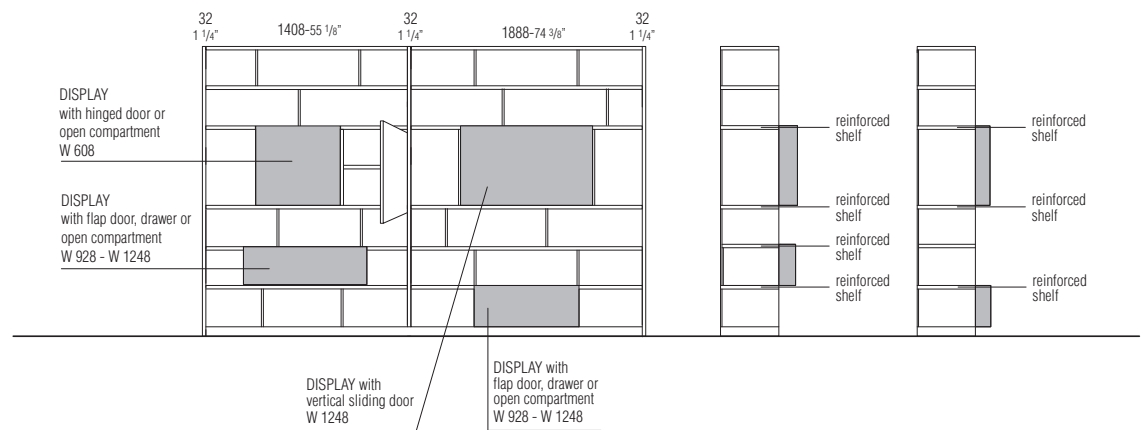
MODULES CONSTRUCTION 1440 - 1920 (56 3/4" - 75 5/8")

Molteni & C

Example 1

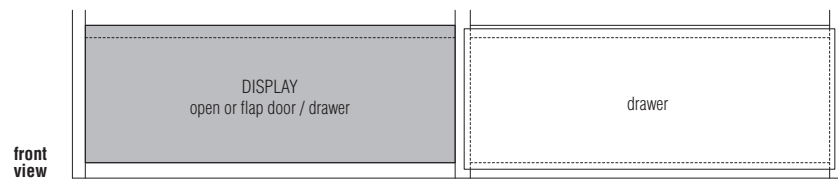


Example 2



The protruding DISPLAY elements can be freely inserted into compartments without central dividing panels, but with the use of reinforced shelves. The positioning must always respect the 160 mm pitch because it is fixed to the structure.

If you want to close the adjacent side compartment or install a shelf, you need to use the 32 mm th. wooden central dividing panel (see examples).



DATASHEET

REGISTERED
DESIGN

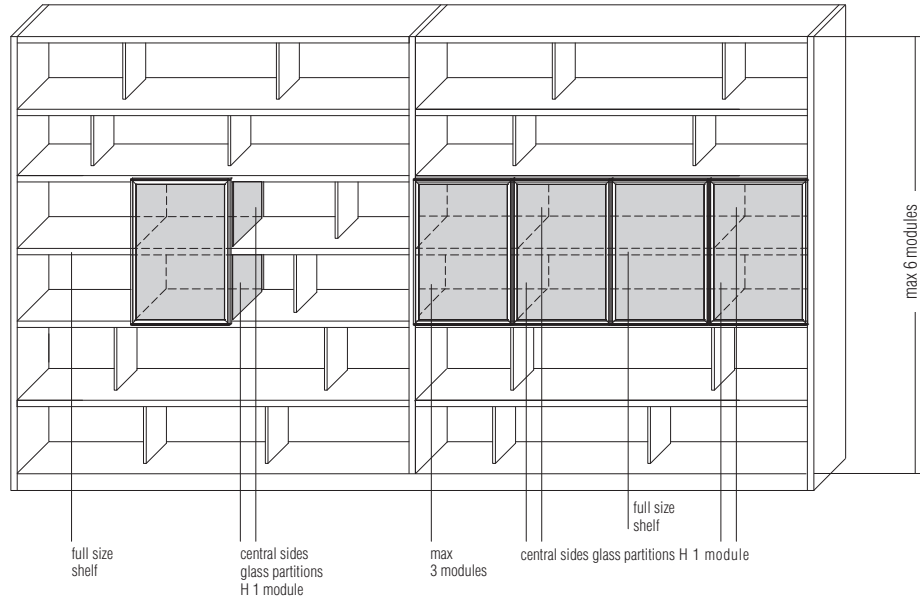
IX.2022

MODULES CONSTRUCTION 1280-1440-1920 (50 3/8" - 56 3/4" - 75 5/8")

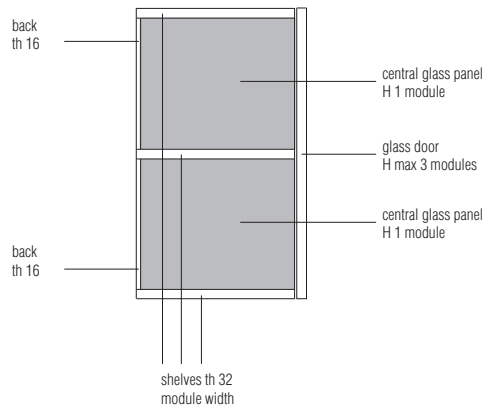
W 1280-1440-1920 compartments can be used for the installation of glass doors with glass side panels.
In this case, the shelves are full size flush with the panels and the central glass dividers are always H 1 module.

Molteni & C

10 -
28



side section



DATASHEET

REGISTERED
DESIGN

IX.2022

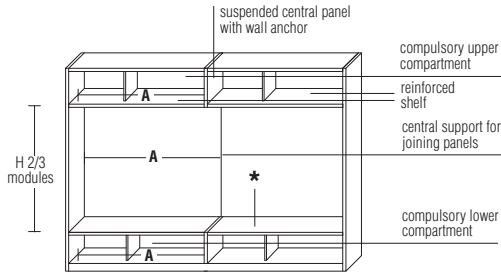
POINTS OF ATTENTION WITH MODULAR COMPONENTS

Molteni & C

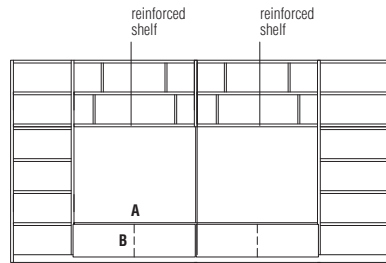
11 –
28

Compartments with multiple boiserie panels D 400

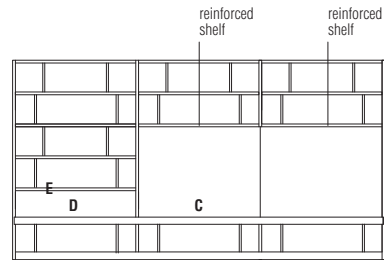
The presence of a compartment above and below the boiserie compartment with double panels is mandatory. In addition, the width of the upper and lower shelves **A** must correspond to the width of the panel



* The lower part of the boiserie compartment must always be finished with a wooden top th. 10 or a protruding shelf D 540 H 72



- A** - The 10 th. wooden top is always of the same size as the wall panelling compartment
- B** - The compartment can be closed with a flap door or drawers following the construction rules



- C** - The protruding shelf can be extended on more compartments in the composition
- D** - The compartment above the protruding shelf cannot accommodate panels of th. 32
- E** - For compartments W 1280-1440-1920 always use a reinforced shelf

Structure for Harry's Bar

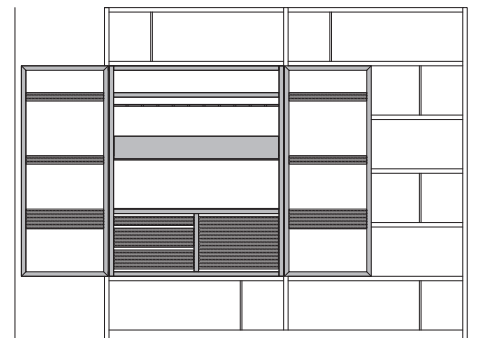
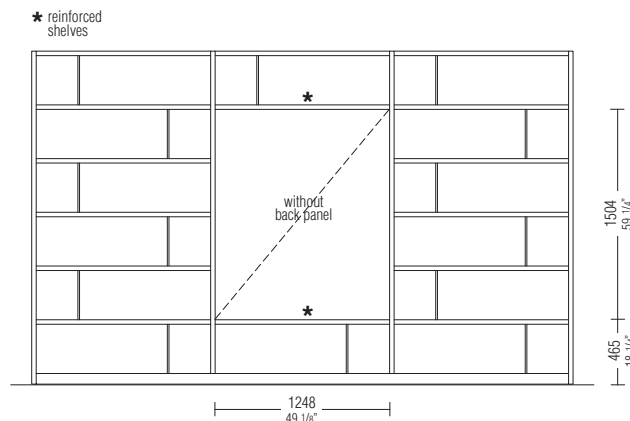
Harry's must always be incorporated:

- in columns D 400
- in columns W module 1280
- between two side panels
- starting from the second module (H 465)

The compartment where Harry's fits is without a back panel because the price of the back panel is already included in the bar module.

The structural shelves below and above Harry's bar module must be reinforced. The 505 UP - System compositions with Harry's bar module are wall mounted.

Harry's bar fitted at the side requires a minimum space of 640 mm for door opening. Two Harry's bar can be arranged in the same composition by inserting an W 640 compartment between the two



Internal drawers can only be opened after the door has been fully rotated to 180°

DATASHEET

REGISTERED
DESIGN

IX.2022

HOLE DIAGRAM FOR SIDES

Drilling of panels for shelf positioning is available in these modes to be specified when ordering:

- A - Holes in shelves only
- B - 3-hole set (64 mm centre distance) distance 384 mm
- C - Regular interval 64 mm - with surcharge

If there are no specific indications, type B drilling will be carried out - group 3 holes.

The individual columns of a composition can have different perforations.
Within the column the type of drilling cannot vary.

Notes

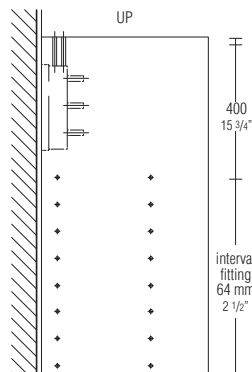
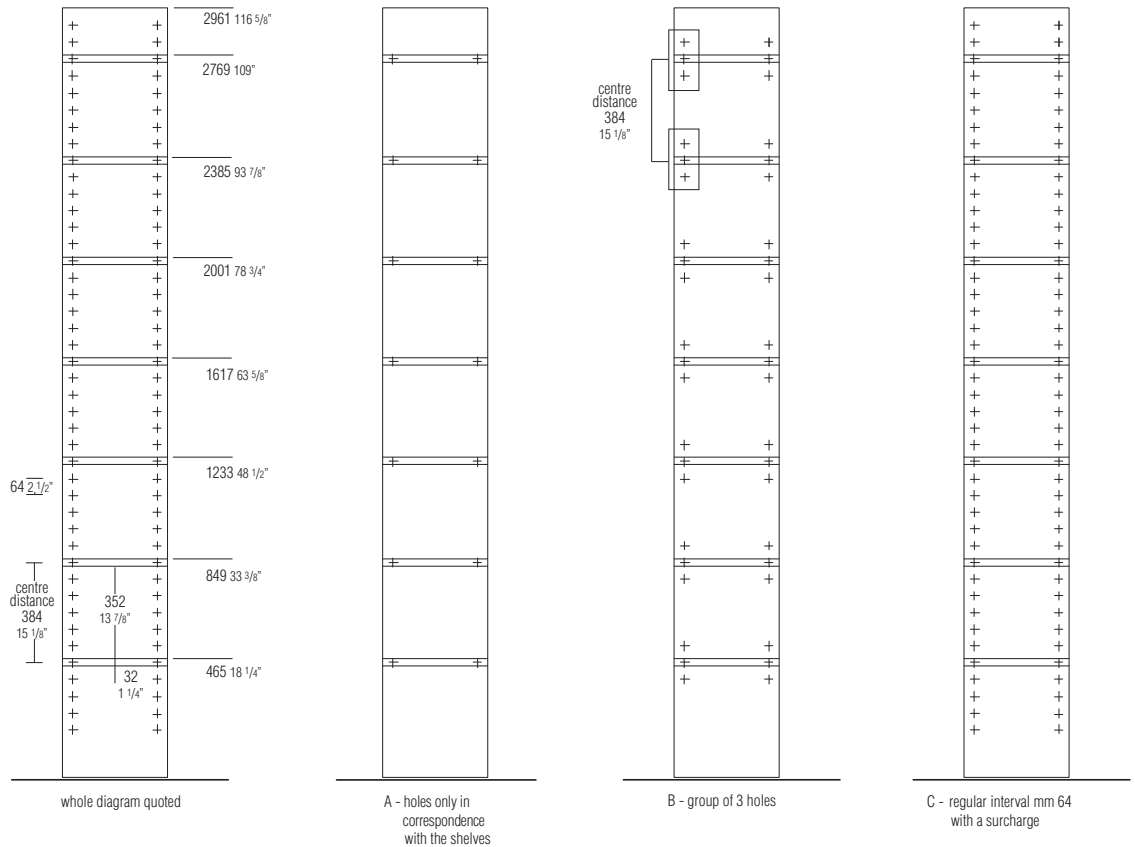
Wall mounted panels have no holes for shelves in the upper part for mm 400 (see design).
Central dividing panels H 1 module are always unperforated.

In the open parts, it is possible to make compartments 64 mm higher or lower than the standard module (384 mm).

For this purpose, 416 mm and 288 mm centre dividers and back panels are available.

Molteni & C

12 -
28



DATASHEET

REGISTERED
DESIGN

IX.2022

CHANGE OF DEPTH

When the module of the smaller depth is open, the change of depth is made by directly attaching the components of this module to the adjacent panel of the larger depth (**example 1**).

When the module of the smallest depth is closed with doors or drawers, the change of depth is achieved by combining two compositions of different depths (**example 2**).

Finishing tops in glass and marble cannot be used in situations where there is a change in depth.

Any top on composition with change of depth will always be supplied in two parts.

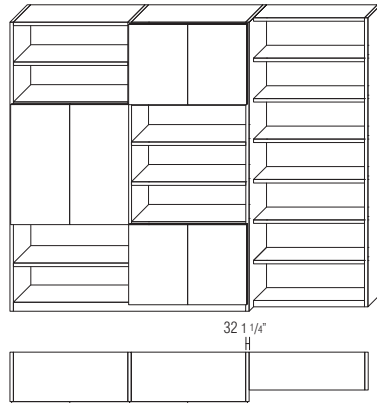
CHANGE OF HEIGHT

With the change in height, the top is used as in the drawing below.

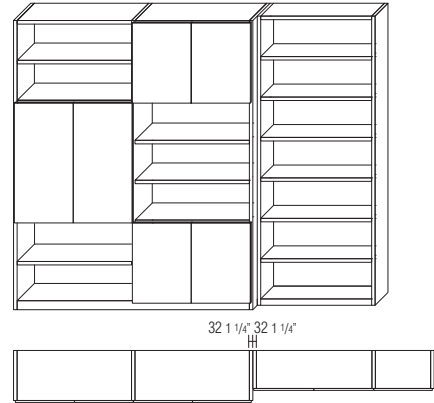
Molteni & C

13—
28

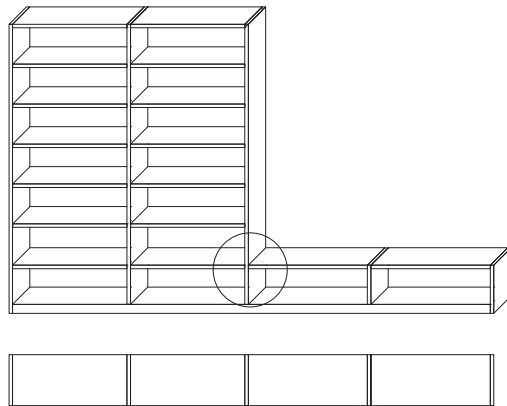
Change of depth single composition
(example 1)



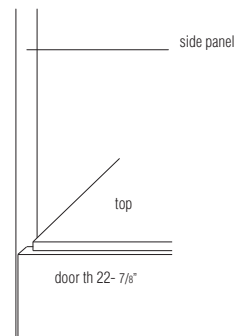
Change of depth 2 compositions
(example 2)



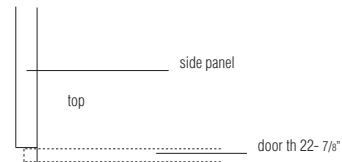
Change of height single composition



front



plan



DATASHEET

REGISTERED
DESIGN

IX.2022

moltenigroup.com

Dimensions in millimeters and inches. The right to discontinue and make changes is reserved. This information is based on the latest product information available at the time of printing.

INTERNAL DRAWER UNITS

For open compartments, hinged glass doors and 22 mm th. hinged wood pressure opening doors

The drawer units can be inserted between two standard 32 mm thick shelves (example **A**).

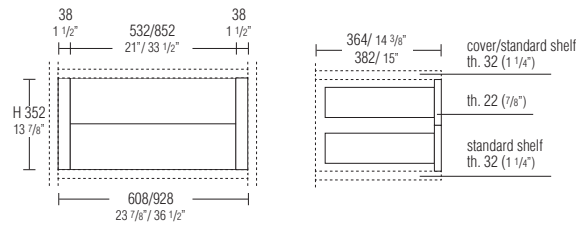
The drawers are always pressure-opening and always fully extractable.

The drawers are flush with the structure for open compartments while they are set back by 18 mm (in alignment with internal shelves) when installed in hinged glass doors.

* woods
eucalyptus, graphite oak

Molteni & C

Example A



14—
28

DATASHEET

REGISTERED
DESIGN

IX.2022

BOISERIE COMPARTMENTS WITH MULTIPLE PANELS D 400

By using modules 1280-1440-1920 it is possible to create boiserie compartments with two or three back panels up to W mm 5728.

The boiserie compartment always has two or three removable backs on which the TV can be mounted.

If there is a TV mounted, the client is responsible for paying for the wire hole on the back. The back is fixed on its front. The extension must include the use of the bar even if it is mounted on the wall or the composition is suspended. The backs are hooked in the centre thanks to the central panel connecting support.

The structural shelf above the boiserie compartment is always reinforced.

For sizes greater than 3808 mm, the support bar will be made in two pieces.

The height of the back panel is lower than the height of the compartment to allow the routing of cables from the cavity to the TV compartment (see details A and B).

TV signal receiver The ø 18 sensor is always positioned in the lower part of the TV back. Specify right or left when ordering. IR bars can only be placed in a compartment adjacent and/or below the TV back (to be specified when ordering). The cost of a wire passage is not included. The bar can only be fixed to the structural shelves.

Wire passage

The Hi-Fi compartment may be connected using a wire passage to adjacent or lower compartments. The wire passage is located behind the TV back.

Reductions

Reductions in width only possible with a back panel surcharge.

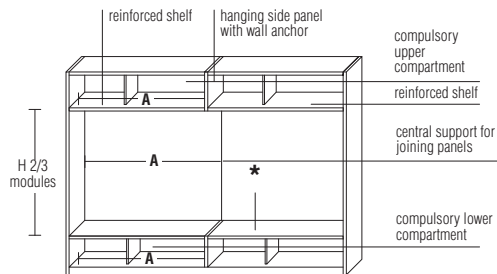
Molteni & C

15 —
28

Compartments with multiple boiserie panels D 400

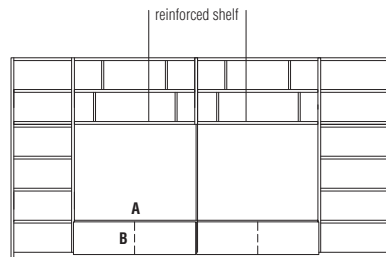
The presence of a compartment above and below the panel compartment with double panels is mandatory.

In addition, the width of the upper and lower shelves **A** must correspond to the width of the panel

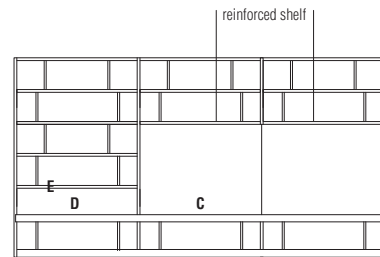


Panels can only be reduced in width.
Consider surcharge.

* The lower part of the boiserie compartment must always be finished with a wooden top thickness 10 or a protruding shelf D 540 H 72



- A** - The 10 th. wooden top is always of the same size as the boiserie compartment
- B** - The compartment can be closed with a flap door or drawers following the construction rules



- C** - The protruding shelf can be extended on more compartments in the composition
- D** - The compartment above the protruding top cannot accommodate panels of th. 32
- E** - For compartments W 1280-1440-1920 always use a reinforced shelf

DATASHEET

REGISTERED
DESIGN

IX.2022

TV COMPARTMENTS D 400 (SINGLE PANEL)

Using the module widths 1280-1440-1920, it is possible to create TV compartments.
The TV compartment is always equipped with a removable backrest on which the TV can be hung. If there is a TV mounted, the client is responsible for paying for the wire hole on the back.
The back is fixed on its front. The extension must include the use of the bar even if it is mounted on the wall or the composition is suspended.

The structural shelf above the TV compartment is always reinforced.

The height of the TV back panel is lower than the height of the compartment to allow the passage of cables from the cavity to the TV compartment (see details A and B).

TV signal receiver

The \varnothing 18 sensor is always positioned in the lower part of the TV back.
Specify right or left when ordering. IR bars can only be placed in a compartment adjacent or below the TV back (to be specified when ordering). The cost of a wire passage is not included. The bar can only be fixed to the structural panels.

Wire passage

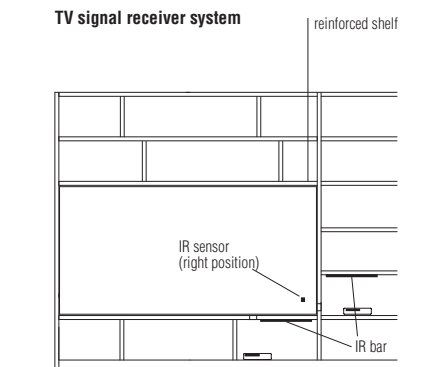
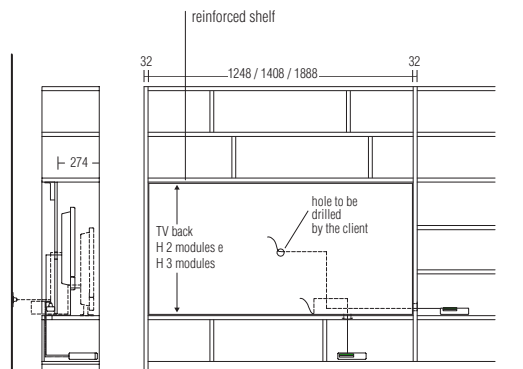
The Hi-Fi compartment may be connected using a wire passage to adjacent or lower compartments. The wire passage is located behind the TV back.

Reductions

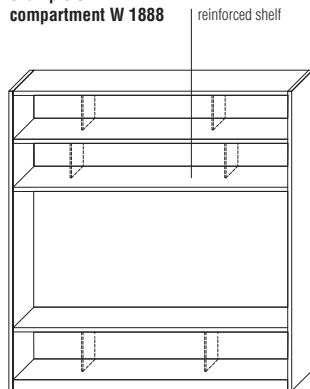
Reductions are only possible for open TV compartments at a surcharge for cutting the back panel (min. reduction H 2 modules) and for bar.

Molteni & C

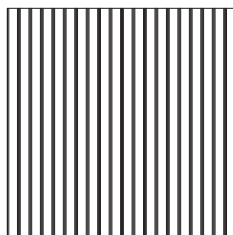
16 —
28



example of TV compartment W 1888



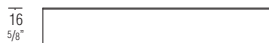
Boiserie panels / backs for TV th 16 - Wood rays



Finishes

eucalyptus rays (striped)
graphite oak rays (striped)
sunrise oak rays (striped)
thermo oak rays (striped)

The panel striping is always in a black finish



DATASHEET

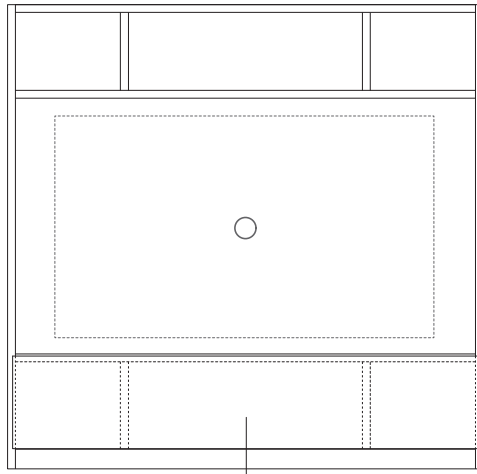
REGISTERED
DESIGN

IX.2022

EXAMPLES OF TV COMPARTMENT W 1280/1440/1920

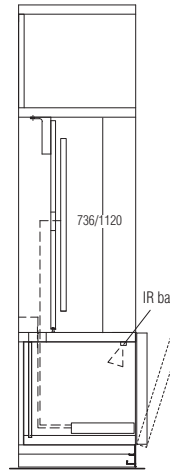
Molteni & C

17 -
28

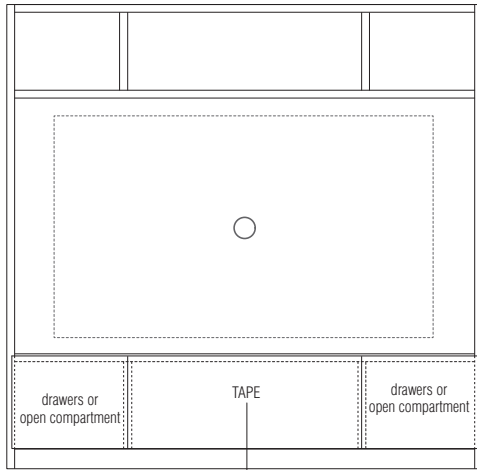


flap door (section 1)

section 1

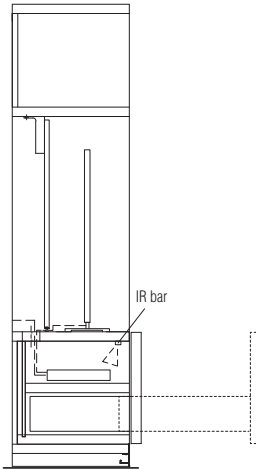


D 400

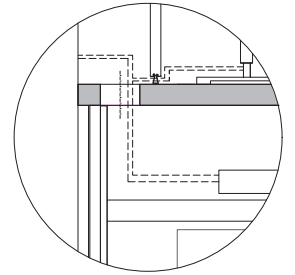


TAPE (section 2)

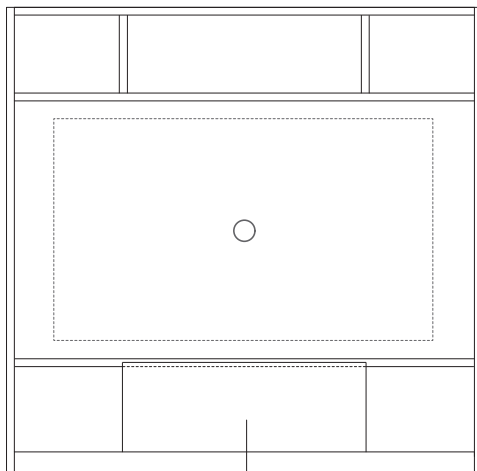
section 2



D 400

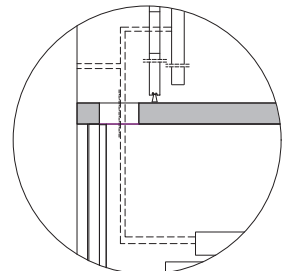
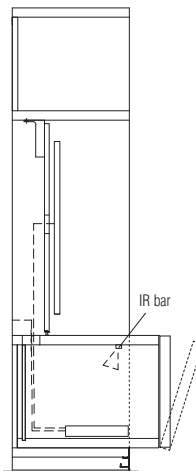


detail A - with resting TV



DISPLAY D 500
with flap door (section 3)

section 3



detail B - example with suspended TV

DATASHEET

REGISTERED
DESIGN

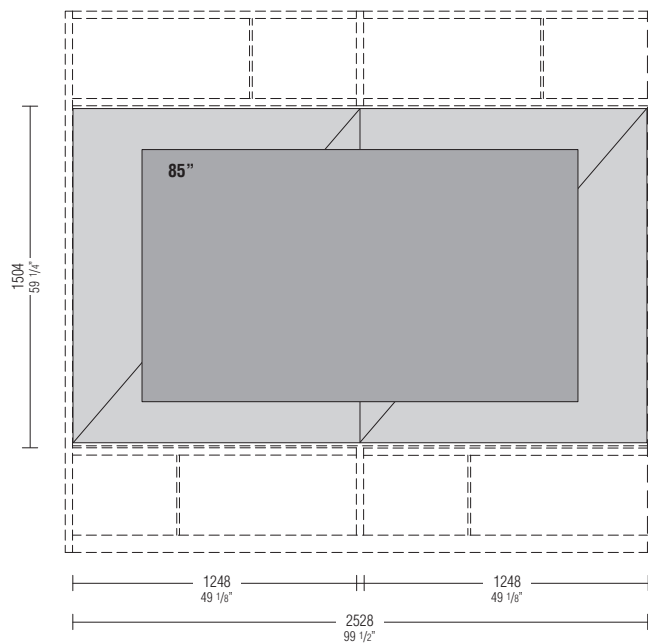
IX.2022

EXTRA-LARGE TV COMPARTMENT

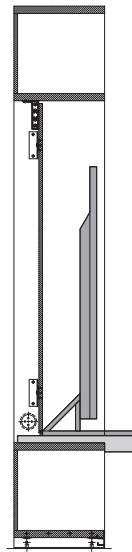
For up to 85" televisions, the TV compartment shown on this page can be created using two **SHB12/16** panels and a **PGB16** central support bar. In the case of a supported television, use the projecting top, as per the section displayed.

Molteni & C

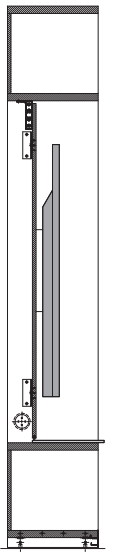
18 -
28



Supported
TV

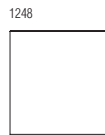


Hanging
TV



For wall-mounted TVs, it is inadvisable to fasten mobile arms to panels

TV panel th 16
H 1504 (4 modules)



SHB12/16

wire passage



EPA1

central support for joining panels



H 4 modules
PGB16

DATASHEET

REGISTERED
DESIGN

IX.2022

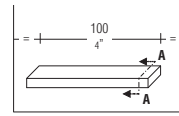
VERTICAL SLIDING DOORS AND FLAP DOORS TH. 35

The compartments of the compositions 505 UP W 1280-1440 can be closed with vertical sliding doors always in H 2 modules. The lower and upper shelves must be reinforced structural shelves with interruption of the back panel. The vertical sliding door cannot be used in the D 320. For the opening of the vertical sliding door the two upper compartments must be open. The vertical sliding mechanism is fully contained in the 2-module H compartment, or 3-module H compartment if in combination with the flap door. Two vertical sliding doors can be placed side by side. The vertical sliding door can be closed on a protruding shelf D 540 H 72.

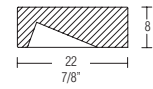
Notes

The price of the vertical sliding door includes the rails attached to the panels. On request, without extra charge, the vertical sliding door can be fitted with a type "B" handle centrally located at the bottom.

"B" type handle



section A-A



Reductions

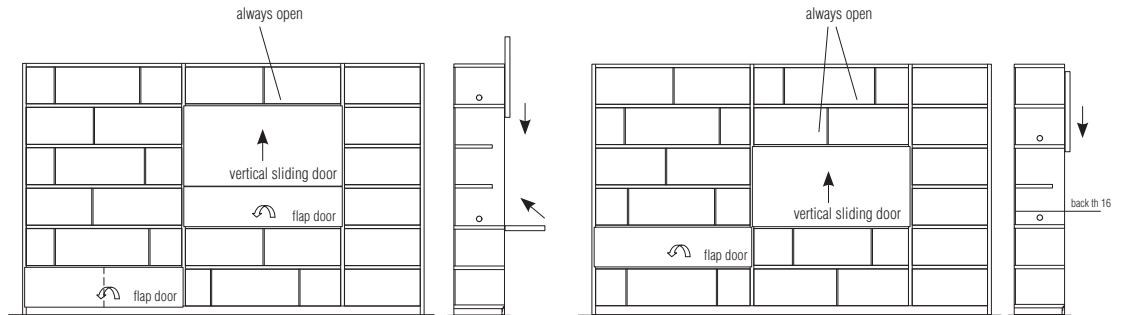
No reductions possible

* wood only with horizontal grain

Molteni & C

19 -
28

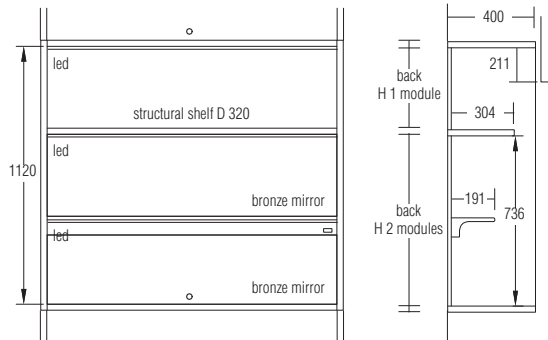
Reinforced shelves



Deluxe Interior (to insert into compartment with standard back panels)

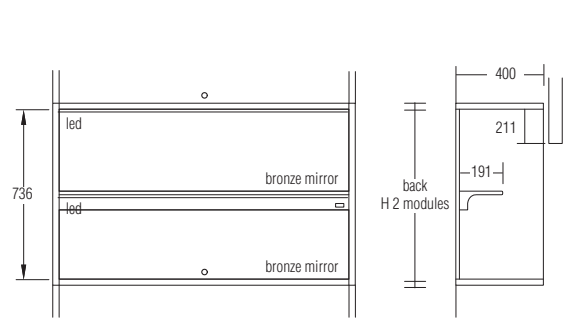
Version with vertical sliding door + flap door accessorised with:

- 2 bronze mirrors
- Shelf covered in Eco Skin in the colours of the Molteni Range with electrical outlet and USB charger
- Lighting system with 3 LED lights with switch



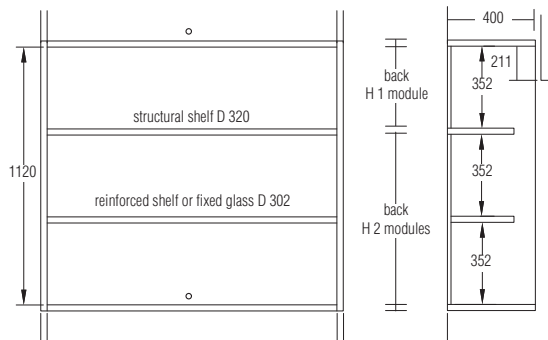
Version with vertical sliding door accessorised with:

- 2 bronze mirrors
- Shelf covered in Eco Skin in the colours of the Molteni Range with electrical outlet and USB charger
- Lighting system with 2 LED lights with switch

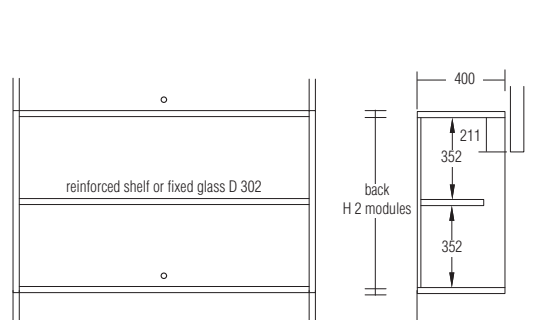


Standard interior

Version with vertical sliding door + flap door



Version with vertical sliding door



DATASHEET

REGISTERED
DESIGN

IX.2022

PROTRUDING SHELVES D 540 H 72 / H 87 FROM THE FLOOR

Protruding tops can only be used in D 400 compositions.

In floor standing compositions the protruding top can be positioned at a height of 1 or 2 modules, in wall-hung compositions also on the base.

The protruding shelves can be used as a one-sided floor-resting base.

Protruding shelves are placed on the 32 mm structural shelves with the requirement to cut off the back panel, or on the special brackets for wall mounting (**drawing 1**).

The compartment above the protruding shelf must always have a back panel, TV panels or boiserie panels; it can only be closed with a vertical sliding door.

The compartment underneath the protruding shelf is always open.

It is possible to make protruding shelves in one piece up to 2868 mm (two modules of 1440). For longer protruding shelves, the joint is always made at a joint (see detail below **drawing 5**).

The shelf above the protruding board in widths 1280, 1440 and 1920 must always be a reinforced structural shelf.

If used as a floor-resting unit of height higher than 2868 mm, make sure two finished elements are placed adjacent to it.

The shelves can be reduced in width when they are free-standing (**drawing 4**) or for the external part of the composition (**drawing 3**). Cutting to size is included in the price.

The fixing of the wall brackets is the responsibility of the customer and must be carried out in a workmanlike manner, on masonry walls suitable to support the weight and load of the top.

The price of the fixing brackets is not included in the price of the protruding shelf.

The quantity of brackets to be used for free-standing shelves or shelves outside the composition is indicated in the price list according to the corresponding size.

The **EPA3** wire passage can always be applied in a central position with respect to the lower compartment; in the case of a shelf outside the composition, it is expected to be centred with respect to the projecting measurement. Not suitable for floor-resting base units. In the case of Eco Skin shelf, the wire passage will be supplied matt lacquered in a corresponding colour.

Shelf wood finishes

eucalyptus
graphite oak
thermo oak
sunrise oak

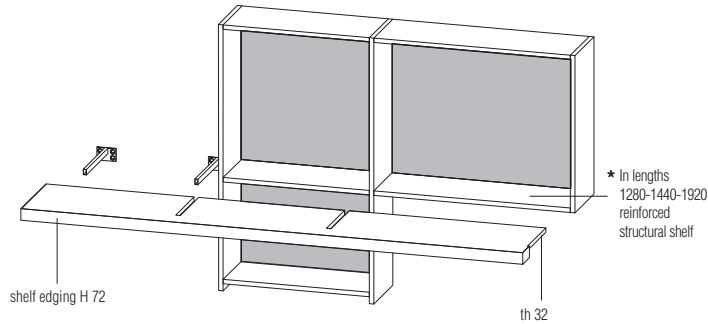
Shelf Eco Skin finishes

grey
mink
hemp
ivory
dark brown
earth
arctic
taupe

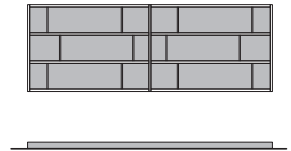
Shelf edging finishes

matt lacquer colours in the Molteni colour range
pewter colour painted
copper painted

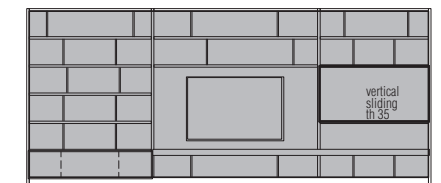
Drawing 1 - Construction diagram



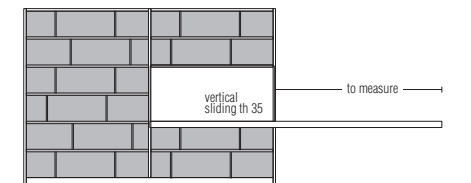
Drawing 6



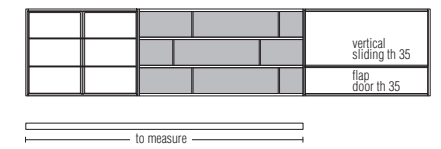
Drawing 2



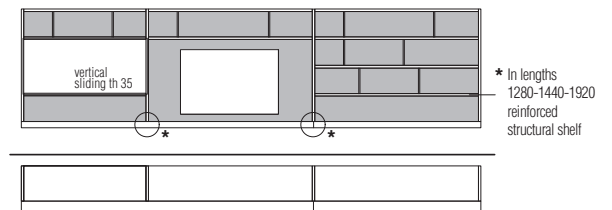
Drawing 3



Drawing 4



Drawing 5



DATASHEET

REGISTERED
DESIGN

IX.2022

PROTRUDING ELEMENTS DISPLAY D 500

DISPLAY protruding elements can only be inserted in D 400 modules.
Only an open DISPLAY can be placed above and below the DISPLAY with flap door.
Protruding DISPLAY elements are not reducible.

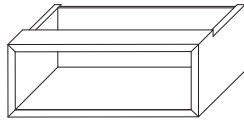
Warning:
the installation of the DISPLAY in the W 960/1280/1440/1920 modules always requires the use of reinforced structural shelves.

Molteni & C

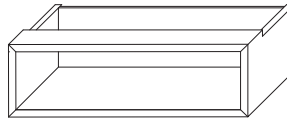
21 -
28

Open DISPLAY D 500

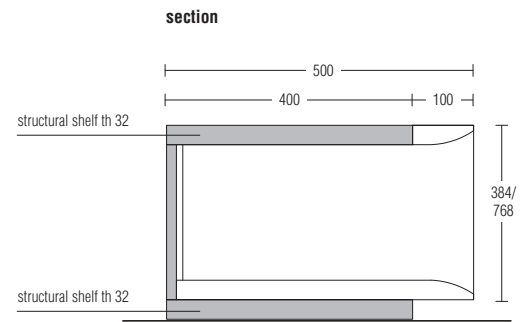
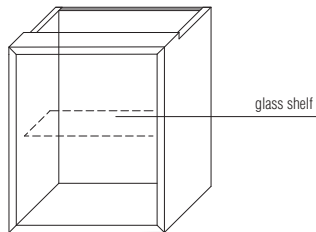
W 928 H 384



W 1248 H 384

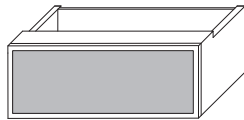


W 608 H 768



DISPLAY with doors and drawers D 522 / 535

W 928 H 384



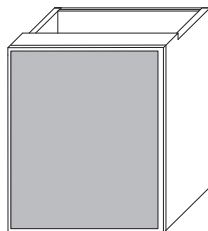
Flap door and drawer
th 22 or 35

W 1248 H 384



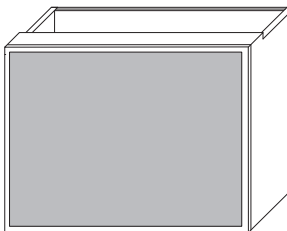
Flap door and drawer
th 22 or 35

W 608 H 768

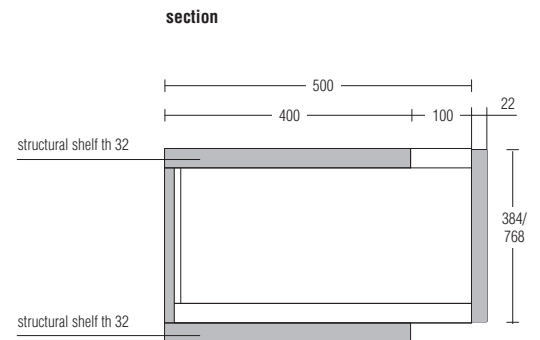


Hinged door
th 22 or 35

W 1248 H 768



Vertical sliding door
th 35



DATASHEET

REGISTERED
DESIGN

IX.2022

HARRY'S BAR MODULE

Harry's bar module is available in two versions:
- with glass doors (transparent stopsol glass or stopsol glass etched)
- with wooden doors

Both options are fitted with 180° hinged doors that open independently of the presence of DISPLAY in adjacent columns.

Harry's is always equipped with internal LEDs (see internal diagram section) with a controlled socket system. For remote control kit (optional) see price list on page 68.

There can be no reductions of any kind and changes to the planned components.

Notes (see drawing 1)

Harry's must always be incorporated:

- in columns D 400
- in columns W module 1280
- between two side panels
- starting from the second module (H 465)

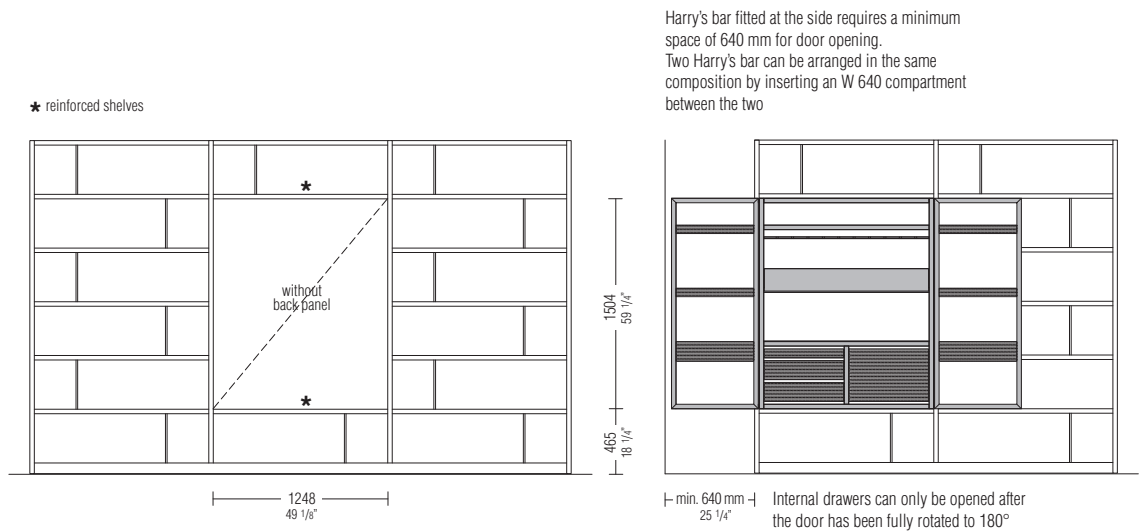
The compartment where Harry's fits is without a back panel because the price of the back panel is already included in the bar module.

The structural shelves below and above Harry's bar module must be reinforced. The 505 UP - System compositions with Harry's bar module are wall mounted.

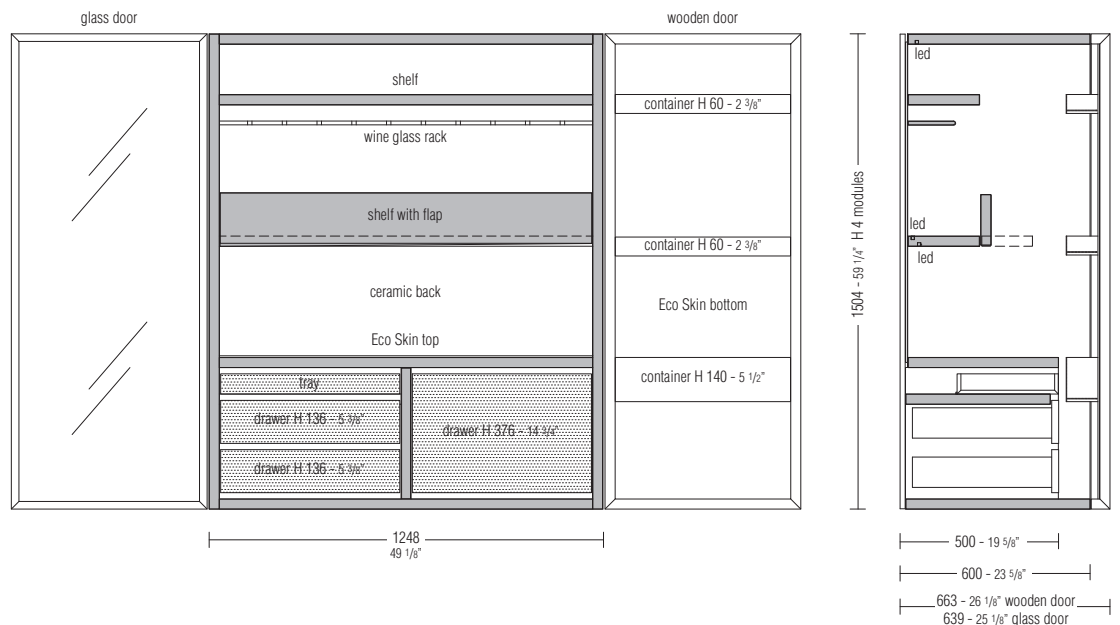
Molteni & C

Drawing 1

22 -
28



Internal diagram



DATASHEET

REGISTERED
DESIGN

IX.2022

HARRY'S BAR MODULE

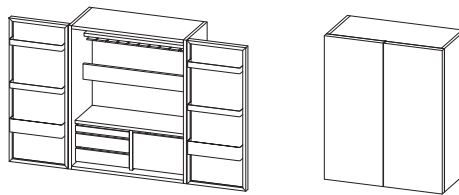
Notes

- ▶ No reductions of any kind are possible.
- ▶ When ordering, please specify:
 - finish of structure components (matt lacquer)
 - fronts of internal drawers (wood)
 - finish of wood door and interior parts Eco Skin
 - finish of glass door
 - finish of top Eco Skin
 - finish of back panel

Molteni & C

Harry's wooden door

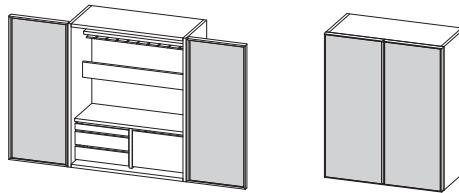
W 1248 - 49 1/8"
H 1504 - 59 1/4"
D 663 - 26 1/8"



HE12/15

Harry's glass door

W 1248 - 49 1/8"
H 1504 - 59 1/4"
D 639 - 25 1/8"



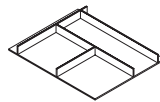
transparent stopsol glass
stopsol glass etched
HW12/15

Fitting
Drawer H 136 - 5 3/8"

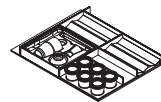
KIT 136A
Base

KIT 136B
Cocktails

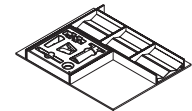
KIT 136C
Wine



HH06/13A



HH06/13B



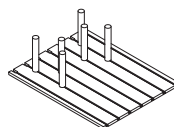
HH06/13C

Fitting
Drawer H 376 - 14 3/4"

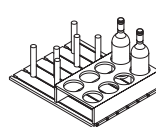
KIT 376A
Base

KIT 376B
Bottles

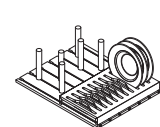
KIT 376C
Plates



HH06/37A



HH06/37B



HH06/37C

DATASHEET

REGISTERED
DESIGN

IX.2022

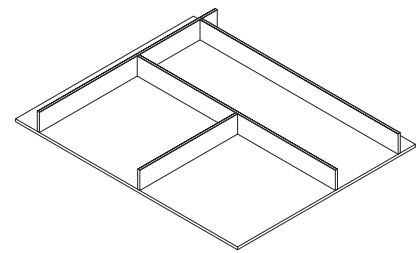
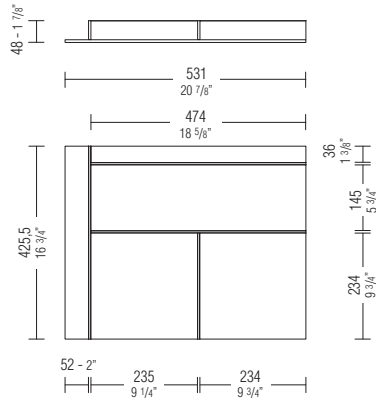
HARRY'S BAR MODULE

Fittings for drawers H 136

Drawers can be customised with the following fittings.

There can be no modifications to the kits.

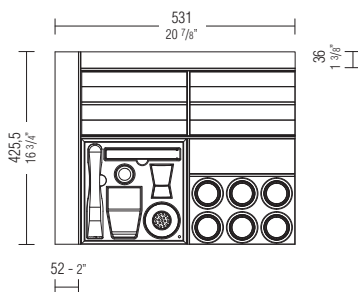
KIT 136A Base - without accessories



Molteni & C

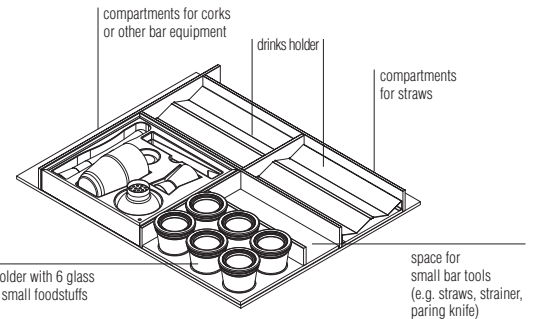
24—
28

KIT 136B Cocktails - base with cocktail set, spice holder and drinks holder

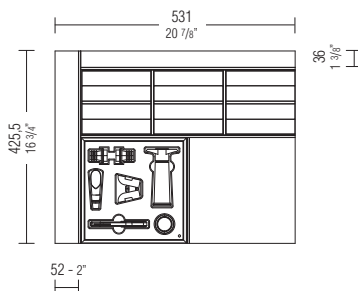


Cocktail set composed of:

- shaker
- jigger
- ice tongs
- pestle

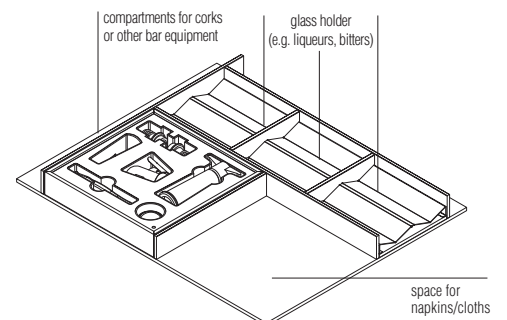


KIT 136C Wine - base with wine set and glass holder



Wine set composed of:

- Roero professional corkscrew
- champagne stopper
- drip saver
- stainless steel wine pourer
- wine preserver with 2 silicone stoppers



DATASHEET

REGISTERED
DESIGN

IX.2022

HARRY'S BAR MODULE

Fittings for drawers H 376

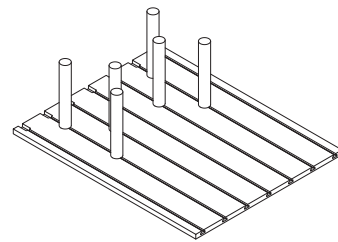
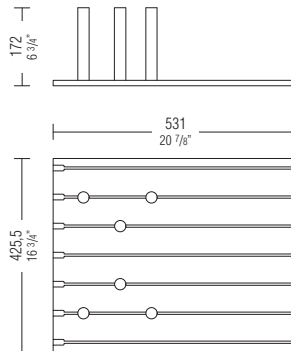
Drawers can be customised with the following fittings.

There can be no modifications to the kits.

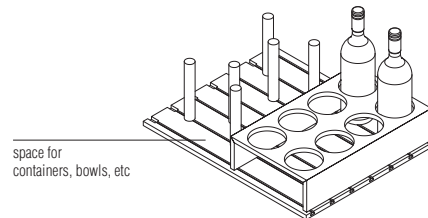
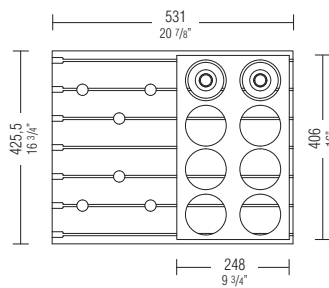
Molteni & C

25 –
28

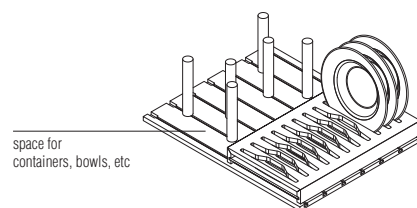
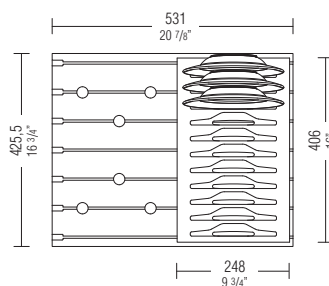
KIT 376A Base - with 6 separators



KIT 376B Bottles - base with 6 separators and bottle holder



KIT 376C Plates - base with 6 separators and plate holder



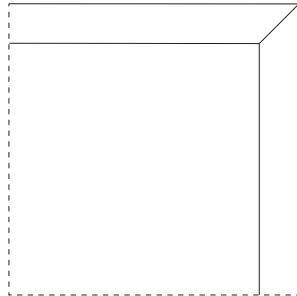
DATASHEET

REGISTERED
DESIGN

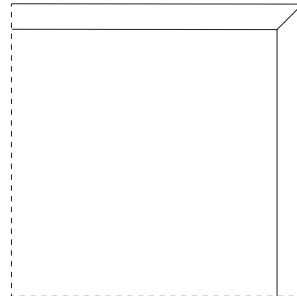
IX.2022

DOORS

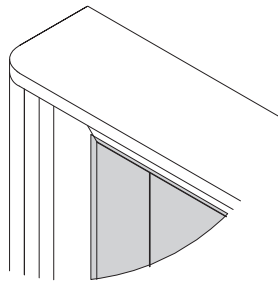
**pressure opening
th 35**



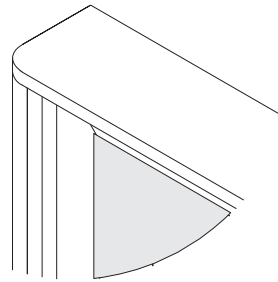
**pressure opening
th 22**



**hinged
opening glass
th 35**



**hinged
opening Eco Skin
th 35**



EXTERNAL DRAWERS WITH PRESSURE OPENING D 400 - TH. 22

Standard version comes with cushioned fully extractable runners.

* wooden drawers only with horizontal grain

** horizontal satin finish

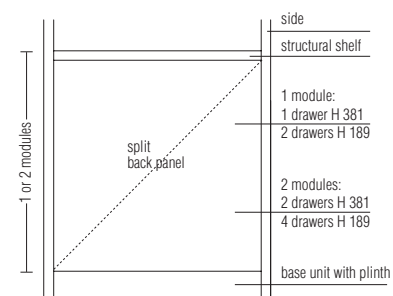
Reductions

No reductions possible

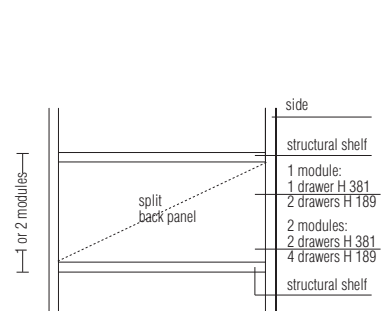
Notes

External drawers can be inserted into compartments with a height of 1 or 2 modules with a back panel of 16 mm th.

Drawers placed on the base



Drawers within the unit



DATASHEET

REGISTERED
DESIGN

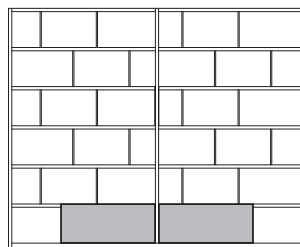
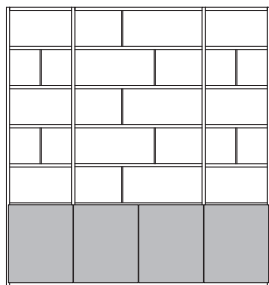
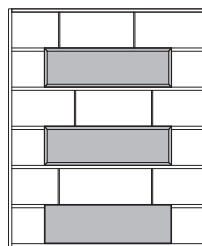
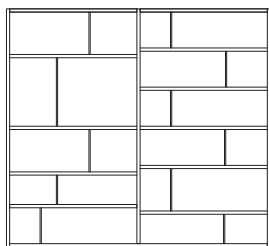
IX.2022

COMPOSITION EXAMPLES

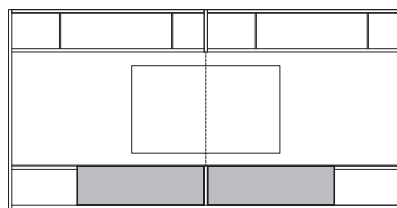
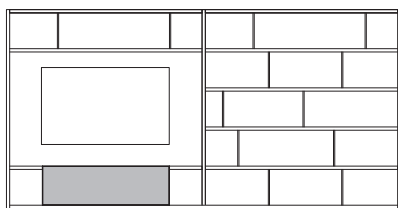
Molteni & C

27 -
28

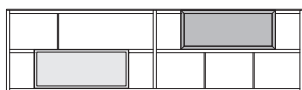
Bookshelves



TV compartments



Service elements



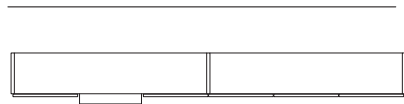
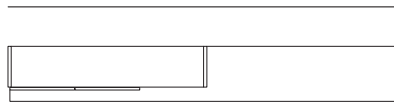
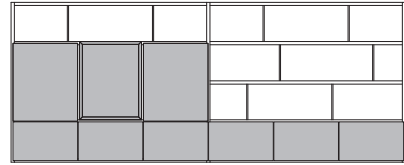
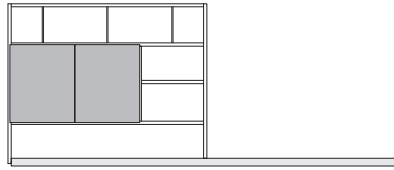
DATASHEET

REGISTERED
DESIGN

IX.2022

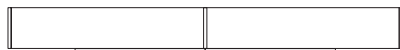
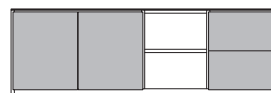
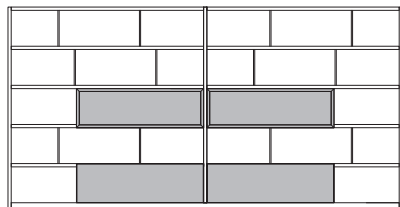
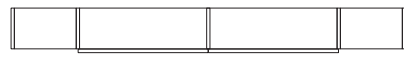
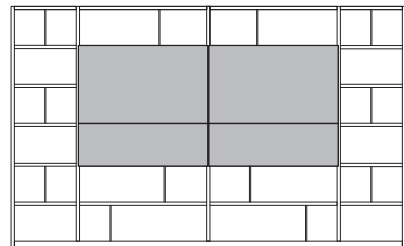
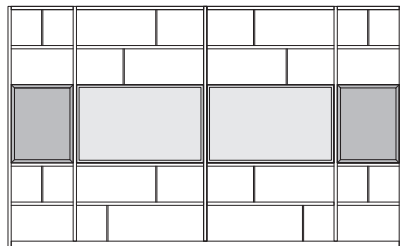
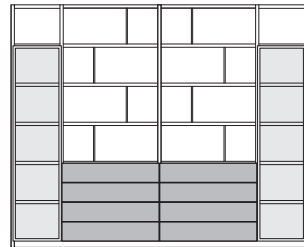
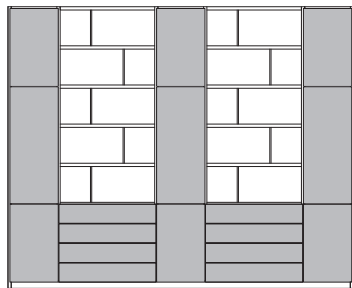
COMPOSITION EXAMPLES

Storage or service elements



Molteni & C

28 -
28



DATASHEET

REGISTERED
DESIGN

IX.2022