

Fly case

NIGHT UNITS



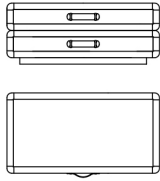
Fly case

NIGHT UNITS

Night table with structure in multilayer wood, covered in leather from the collection or veneered in essence from the collection.

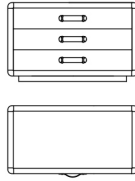
Metal details in the finishings from the collection.

Optional hexagonal or lozenge quilted leather.



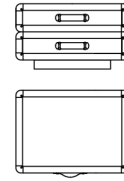
C.FLY.321.A

Night table with 2 drawers



C.FLY.321.B

Night table with 3 drawers



C.FLY.321.C

Night table with 2 drawers

Standard features

L 95 D 50 H 38 cm

L 37.4 D 19.69 H 14.96 in

Standard features

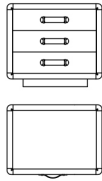
L 95 D 50 H 58 cm

L 37.4 D 19.69 H 22.83 in

Standard features

L 68 D 50 H 38 cm

L 26.77 D 19.69 H 14.96 in



C.FLY.321.D

Night table with 3 drawers

Standard features

L 68 D 50 H 58 cm

L 26.77 D 19.69 H 22.83 in

Fly case

NIGHT UNITS

UPHOLSTERY

Leather cat. A

Leather cat. B

Leather cat. C Cavallino

See the detailed files in the "Technical information" section

Fly case

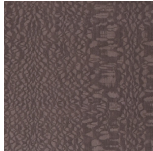
NIGHT UNITS

STRUCTURE

Wood



Oak
Veneered
Dyed Wengé



Rose
Carbalho
Veneered



Grey
Carbalho
Veneered



Eucalyptus
Frisé
Veneered

Metal



Black
Chrome



Chrome



Gold



Brushed
Gold



Brushed
Bronze

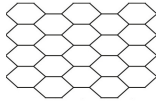


Brushed
Dark Bronze

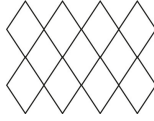
Fly case

NIGHT UNITS

OPTIONALS UPHOLSTERY



Hexagonal
quilted
leather



Lozenge
quilted
leather