

# Effimera

---

## CHAIRS

A linear and delicate design that recalls the subtlety and lightness of the butterfly. "Effimera", in fact, is the species of insect that gives the name to the chair and its shapes are found in the long and thin legs and in the arms inspired by the wings. The design of the chair is featured by the repetition of linear series and arches with the same equidistance.



Chair with structure in metal and foam, with Black Chrome finishing. Upholstery in leather cat. B Nabuk L.08.07 Dark Silver.

## CHAIRS

Chair with structure in metal and foam, with Black (matt), Brushed Bronze or Black Chrome finishing. Upholstery in fabric or leather from the collection.



### **F.EFE.132.A**

---

Chair

#### **Standard features**

L 62 D 56 H 83 cm

L 24.41 D 22.05 H 32.68 in

## CHAIRS

### UPHOLSTERY

#### Leathers

Cat. A

Cat. B

Cat. C

#### Fabrics

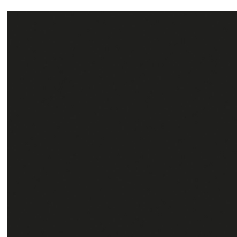
Cat. A

Cat. B

Cat. C

See "Fabrics and Leathers" sheet

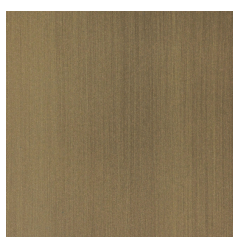
### STRUCTURE



Black



Black Chrome



Brushed Bronze