

# Dorian.2

NIGHT UNITS

---



# Dorian.2

---

## NIGHT UNITS

Night table with structure in multilayer wood veneered in essence from the collection, or glossy lacquered in the colours from the collection, or covered in bevelled natural, bronzed or smoked mirrors.

One drawer with inner cover in microfibre. "Jewel handles" in cast brass in platinum or gold finishing.

Optional marble top. Available on demand in onyx from the collection.

Sand-blasted RC monogram on top for mirror version only.



---

C.DO2.321.A

Night table

### Standard features

L 52 D 48 H 52 cm

L 20.47 D 18.9 H 20.47 in

# Dorian.2

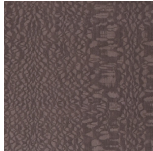
NIGHT UNITS

## STRUCTURE

### Wood



Oak  
Veneered  
Dyed Wengé



Rose  
Carbalho  
Veneered



Grey  
Carbalho  
Veneered



Eucalyptus  
Frisé  
Veneered



Black  
Lacquered



Ivory  
Lacquered



Desert  
Lacquered

### Mirror



Natural  
Mirror



Bronzed  
Mirror



Smoked  
Mirror

# Dorian.2

---

NIGHT UNITS

---

## OPTIONALS STRUCTURE

---

Marble or  
onyx top